



Charitable Bingo Division
Texas Lottery Commission

20th Year Report

1982 – 2002

Table of Contents

A Message From Chairman Clowe	1
From The Director	2
The Commissioners	3
The Charitable Bingo Division	4
Charitable Bingo Operations Division Organizational Chart	5
Bingo Advisory Committee	6
History of Charitable Bingo In Texas	7
Sections of Charitable Bingo	7-8
Charitable Bingo Statistics	9-14
Charitable Bingo Distributions	10
Charitable Bingo Distributions Compared To The Top 100 Foundations In Texas By Grants	10
Charitable Bingo Gross Receipts	10
Charitable Bingo Prizes	10-11
Attendance At Charitable Bingo Occasions In Texas	11
Charitable Bingo By County	11
Charitable Bingo Allocations To Cities & Counties	11
Operator Training Program	12
Assessment & Assistance Inspections	12
Customer Satisfaction	12-14
Average Licenses Pending	14
Conductors By County	14
Charitable Bingo Charts	15-33
Chart 1 <i>Charitable Bingo Distributions 1982-2001</i>	16
Chart 2 <i>Comparison of Charitable Bingo Distributions to Top 100 Foundations In Texas By Grants 1982-2000</i>	17
Chart 3 <i>Charitable Bingo Gross Receipts 1982-2001</i>	18
Chart 4 <i>Charitable Bingo Prizes Paid 1982-2001</i>	19
Chart 5 <i>Charitable Bingo Attendance 1982-2001</i>	20
Chart 6 <i>Charitable Bingo Statistics By County for Year 2001</i>	21-24
Chart 7 <i>Charitable Bingo Allocations to Cities & Counties 1982-2001</i>	25
Chart 8 <i>Charitable Bingo Tax and Prize Fee Allocations Texas Cites 1982-2001</i> ..	26-29
Chart 9 <i>Charitable Bingo Allocation Texas Counties 1982-2001</i>	30-31
Chart 10 <i>Average Licenses Pending 1994-2001</i>	32
Chart 11 <i>Number of Conductors By County</i>	33

A Message From Chairman Clowe

Texas Lottery Commission

It is my pleasure to congratulate the Charitable Bingo Operations Division on its 20th Anniversary! Congratulations also go to the many licensed charitable organizations conducting Charitable Bingo in Texas. Whether these organizations have been conducting bingo for the past 20 years or for a shorter period of time, the charitable distributions they make as a result of Charitable Bingo activities improve the lives of Texans in many ways.

It is always important to help others and enable them to better life for themselves. As individuals and as a society we should strive to be charitable - to be mindful of the needs of others, giving help and support to those requiring our attention. As you read through this report you will see that Charitable Bingo has and continues to make significant charitable contributions via charitable distributions.

This is a celebration of the past twenty years and a celebration of the future of Charitable Bingo in Texas. The future will see the Charitable Bingo Operations Division moving from paper intensive processes to electronic processing, to reducing required functions to their simplest form, of opening new channels of communication to our customers ultimately resulting in benefits to charitable organizations and their work.

On behalf of the members of the Texas Lottery Commission, we join in celebrating
The Most Charitable Game In Texas!

Sincerely,



C. Tom Clowe, Jr.
Commission Chairman

From the Director

It is my pleasure to present to you the 20th Anniversary Report of Charitable Bingo in Texas.

Charitable Bingo is an activity that for 20 years has provided a fun way for people of all ages to get together, have a good time and win prizes. From 1982 to 2001, Charitable Bingo players in Texas have won over \$7,173,825,000!

Charitable Bingo activities resulted in over \$682,453,000 in charitable distributions from 1982 – 2001. If compared to the top 100 foundations in Texas by grants from 1984 to 2000, Charitable Bingo distributions would have ranked in the top 5. In that 14-year span, it would have been ranked number 1 for 7 years; number 2 for 4 years; number 4 for 2 years and number 5 for 1 year. Congratulations to the licensed charities that by playing Charitable Bingo made charitable distributions resulting in this ranking – an accomplishment to be proud of! Charitable distributions benefit the people of Texas in many ways that include providing assistance to; local libraries, veterans organizations, museums, women's shelters, needy children, the disabled, homeless shelters, churches, schools, drug and alcohol treatment programs, medical treatment and research programs, volunteer fire departments, EMS units, police officer organizations, and senior citizen organizations, to name a few. Additionally, Charitable Bingo allocations provide revenue to municipalities and counties in Texas.

The past 20 years have brought many changes to Charitable Bingo in Texas. In the last 5 years many new processes and revised procedures have been implemented creating faster and more efficient processing. The Accounting Services Section provides licensees with assistance in filing quarterly reports, provides automatic adjustments to the quarterly reports and, if necessary, they work with local jurisdictions on the distribution of allocations. The Audit Services Section conducts audits, the Operator Training Programs, and Assessment and Assistance Inspections to provide education and assistance to licensees in the conduct of Charitable Bingo. The Licensing Services Section has implemented telephone and fax amendments processing, revised all licensing forms and applications, and reduced the average daily pending applications from 647 in 1995 to 177 in 2001. The Charitable Bingo Website, www.txbingo.org, became active in June 1999. The website is designed to inform and assist licensees by providing news alerts, access to downloadable forms from all Charitable Bingo Divisions, information about the Operator Training Program, including upcoming programs and on-line registration, Bingo Bulletin, plus many other features. An 800 number was made available for locating bingo halls within a specified zip code and has received over 34,527 calls since being installed. The Charitable Bingo Operations Division is fully staffed with dedicated, capable individuals with the common goal to support and improve Charitable Bingo in Texas.

The 20th Anniversary of Charitable Bingo in Texas is about looking back and celebrating where we began and how far we have come. But it is also a time to plan for the future to ensure that *The Most Charitable Game In Texas* continues to provide benefits for the needy and deserving in Texas for many years to come. Future plans include the continued streamlining of processes and the implementation of new technology for added efficiency and improved customer service.

The Charitable Bingo Operations Division takes the responsibility of regulating Charitable Bingo in Texas seriously. As you read the 20th Year Report, I hope you find we have done our job well. On behalf of my staff and myself, it is our goal to ensure the continued success of Charitable Bingo in Texas. We look forward to many more years of Charitable Bingo in Texas!

Sincerely,



William L. Atkins, Director

The Commissioners

C. Tom Clowe, Jr.

Waco

Commission Chairman

Chairman Clowe serves as the Charitable Bingo representative on the Texas Lottery Commission. Mr. Clowe served as Senior Vice President of Southern Union Company in Austin, a natural gas company with customers in Texas, Missouri, Oklahoma and Florida. He joined Missouri Gas Energy, a division of Southern Union Company, in 1995 as its President and Chief Operating Officer. From 1990 to 1995, Mr. Clowe was Chairman of the Board, President and Chief Executive Officer of Central Freight Lines, Inc., a southwest regional carrier. Mr. Clowe has served as Chairman of the Texas Motor Transportation Association, Chairman of the Tank Truck Conference of the American Trucking Association, and Regional Vice President of the American Trucking Association. From 1987 to 1989, he was employed by the Texas Railroad Commission and was appointed as its first Executive Director in the Commission 97-year history.

Governor George W. Bush appointed Mr. Clowe to the Commission on November 13, 1998, and named him presiding chairman on March 21, 2000. Mr. Clowe's term will expire February 1, 2005.

Elizabeth D. Whitaker

Dallas

Commissioner

Ms. Whitaker, now in private practice, was formerly a partner in the law firm of Carrington, Coleman, Sloman & Blumenthal. Previously she served as an Assistant District Attorney in Dallas County from 1981-82. She is a member of the Texas and Dallas Bar Foundations and the American Law Institute, and serves as a trustee of the Southwestern Legal Foundation. Ms. Whitaker is also involved with Target Kids in Court, a collaborative community effort to help solve the problems presented by children in the court system. Ms. Whitaker earned a bachelor's degree from Wheaton College and her law degree from Southern Methodist University.

Governor George W. Bush appointed Ms. Whitaker to the Texas Lottery Commission on March 21, 2000. Ms. Whitaker was reappointed to the Texas Lottery Commission on March 9, 2001, by Governor Rick Perry. Ms. Whitaker's term will expire February 1, 2007.

James A. Cox, Jr.

Austin

Commissioner

Mr. Cox is a certified public accountant and former President, Chief Executive Officer and Director of Hydrolab Corporation. He is a former partner of Cox Bros. Certified Public Accountants, former president of the Resort and Aviation Groups of the Estate of Howard Hughes, and former accounting and auditing partner at Deloitte Haskins & Sells, now known as Deloitte & Touche. Mr. Cox received a bachelor's degree and master's degree from the University of Texas at Austin. Mr. Cox is a member of the American Institute of Certified Public Accountants, Texas Society of Certified Public Accountants and formerly served on the Texas General Services Commission. He is currently pursuing a doctorate in American Civilization from the University of Texas at Austin.

Governor Rick Perry appointed Mr. Cox to the Texas Lottery Commission on June 3, 2002. Mr. Cox's term will expire February 1, 2003. This appointment requires Senate confirmation.

The Charitable Bingo Division

William L. Atkins

Director

William L. (Billy) Atkins was appointed Charitable Bingo Operations Director by the Texas Lottery Commission on Thursday, October 29, 1998. Prior to that, he served as both Acting Director and Assistant Director of the Charitable Bingo Operations Division of the Texas Lottery Commission.

Atkins first came to the Texas Lottery as the Special Project Coordinator for the Intergovernmental Affairs Section in January 1993, a position he held until April 1994.

Prior to working with the Texas Lottery Commission, Atkins was a Legislative Assistant for Texas Senator John T. Montford from January 1983 to December 1985. He worked as an Administrative Assistant for Texas State Representative Gary L. Watkins from January 1987 to December 1992.

Atkins is currently a member of the North American Gaming Regulators Association (NAGRA), a professional organization of federal, state, local, tribal, and provincial government agencies primarily responsible for regulation of legalized gaming activities. In 2001, he was appointed co-chair to the Charitable Gaming Committee of NAGRA.

Philip D. Sanderson

Assistant Director

Philip D. (Phil) Sanderson was appointed Assistant Director of the Charitable Bingo Operations Division in 1998. Prior to that, he was employed in the Charitable Bingo Operations Division as senior audit manager from 1997 to 1998, and as audit manger from 1994 to 1997.

Prior to working for the Texas Lottery Commission, Sanderson was an auditor for the Texas Alcoholic Beverage Commission from 1981 to 1994. From 1980 to 1981, he was an internal auditor for Baylay Corp.

Division Managers

Roy Gabrillo,
Senior Audit Manager, Audit Services Section

Bruce Miner,
Manager, Licensing Services Section

Terry Shankle,
Manager, Accounting Services Section

Regional Audit Managers

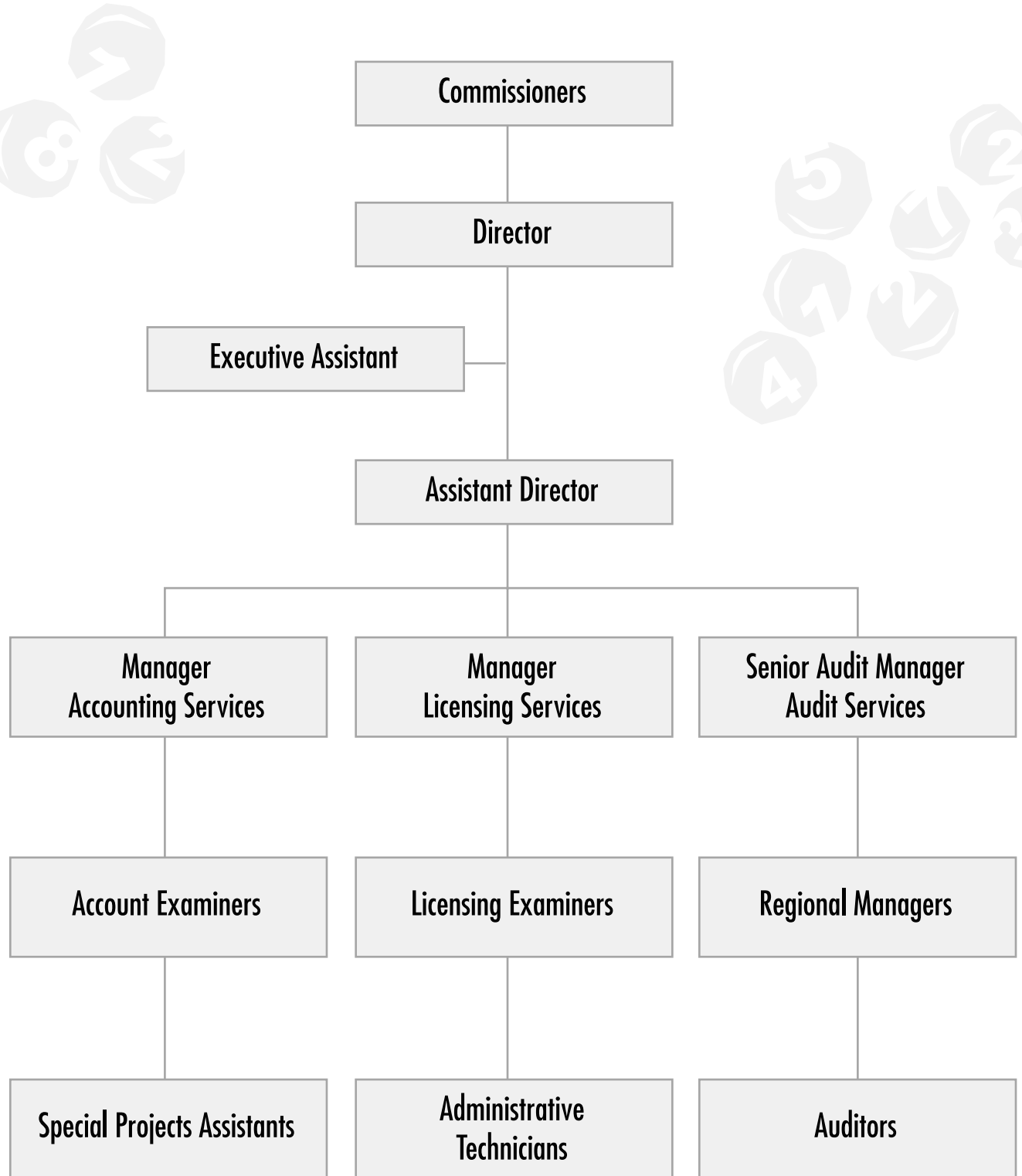
Norma Quezada,
Region I, Odessa & Region V, Austin

Jody Mehaffey,
CPA, Region II, Dallas

Sharon Johnson,
CFE, Region III, Houston

Tom Lieck,
CFE, CISA, Region IV, San Antonio

Charitable Bingo Operations Division Organizational Chart



Bingo Advisory Committee

The purpose of the Bingo Advisory Committee (BAC) is to advise the Texas Lottery Commission on the needs and problems of the state's Charitable Bingo industry. The BAC is composed of nine individuals. One must be a member of the general public; three must be conductors operating Charitable Bingo games; one must be a conductor lessor; two must be commercial lessors; one must be a distributor or manufacturer and the ninth must be a system service provider.

The three-member Texas Lottery Commission makes the appointments to the BAC. The first Bingo Advisory Committee was appointed on March 25, 1995.

2002 - 2003 BAC COMMITTEE MEMBERS

	REPRESENTING
Ricky Turman	General Public
Virginia Brackett (CHAIR)	Charity
Pete Pavlovsky	Charity
Larry D. Whittington	Charity
Mario Manio	Commercial Lessor
Suzanne Taylor	Commercial Lessor
Marilyn Matthews	Conductor Lessor
Daniel Moore	Manufacturer/Distributor
Saleem Tawil, P.E. (VICE-CHAIR)	System Service Provider

1996 - 1997 BAC COMMITTEE MEMBERS

	REPRESENTING
William Neinast (Vice Chair)	General Public
Jeri Finkelstein (Chair)	Charity
Janice Woods	Charity
Elridge Robertson	Charity
Myrtle Sanders	Conductor Lessor
C.L. "Chuck" Bertani	Commercial Lessor
Suzanne Taylor	Commercial Lessor
Brenda Reynolds	Manufacturer/Distributor
Saleem Tawil, P.E.	System Service Provider

2000 - 2001 BAC COMMITTEE MEMBERS

	REPRESENTING
William Neinast (Chair)	General Public
Louie George	Charity
Virginia Brackett (Vice Chair)	Charity
David Castillo	Charity
Robert Rinehart	Conductor Lessor
Lexford Speed	Commercial Lessor
Suzanne Taylor	Commercial Lessor
*Fabian Hoffner	Manufacturer/Distributor
Mary. B. Magnuson	Manufacturer/Distributor
Saleem Tawil, P.E.	System Service Provider

1995 - 1996 BAC COMMITTEE MEMBERS

	REPRESENTING
Roy Middleton	General Public
Diane Allbaugh	General Public
Jeri Finkelstein (Chair)	Charity
Rick Hernandez (Vice Chair)	Charity
Elridge Robertson	Charity
Myrtle Sanders	Conductor Lessor
C.L. "Chuck" Bertani	Commercial Lessor
Suzanne Taylor	Commercial Lessor
Brenda Reynolds	Manufacturer/Distributor

1998 - 1999 BAC COMMITTEE MEMBERS

	REPRESENTING
William Neinast (Chair)	General Public
*Pokey Matthies	Charity
Betty Ann Matthies	Charity
Virginia Brackett (Vice Chair)	Charity
Gene Buchanan	Charity
Ronnie Hunter	Conductor Lessor
*Eddie Garcia	Commercial Lessor
Rosemary Garcia	Commercial Lessor
Suzanne Taylor	Commercial Lessor
*Jim MacPhearson	Manufacturer/Distributor
Fabian Hoffner	Manufacturer/Distributor
Saleem Tawil, P.E.	System Service Provider

1995 BAC COMMITTEE MEMBERS

	REPRESENTING
Sharon Ives	General Public
John W. Crumley (Vice Chair)	General Public
Jeri Finkelstein (Chair)	Charity
Don Bishop	Charity
Janice Woods	Charity
Eldridge Robertson	Conductor Lessor
C.L. "Chuck" Bertani	Commercial Lessor
Cecile Rosenzweig	Commercial Lessor
Jane Thompson	Manufacturer/Distributor

* Did not serve entire term.



History of Charitable Bingo in Texas

In November 1980, Texas voters approved a Constitutional Amendment authorizing Charitable Bingo on a local option basis. The amendment requires all bingo proceeds to be spent in Texas for charitable purposes. The first bingo licenses were issued in the spring of 1982; at that time Charitable Bingo was a division at the Comptroller of Public Accounts. In January 1990, the regulation and administration of Charitable Bingo was transferred to the Texas Alcoholic Beverage Commission. In April 1994, the administration of Charitable Bingo was transferred to the Texas Lottery Commission, where it remains today.

The Charitable Bingo Operations Division of the Texas Lottery Commission oversees the licensing, accounting and audit operations of Charitable Bingo activities based upon the *Bingo Enabling Act* and *Charitable Bingo Administrative Rules*.

Since the issuance of the first licenses in 1982, Charitable Bingo has had positive benefits for charities and players as well as county and municipal governments in Texas. The following pages of this report present the history of Charitable Bingo activities in Texas.

Charitable Purpose of Bingo

A minimum of 35% of adjusted gross receipts must be disbursed from an authorized organization's bingo account for charitable purposes. All net proceeds shall be devoted to the charitable purpose of the organization.

Mission Statement

Provide authorized organizations the opportunity to raise funds for their charitable purposes by conducting bingo. Ensure that all charitable bingo funds are used for a lawful purpose. To promote and maintain the integrity of the charitable bingo industry throughout Texas.

Sections of Charitable Bingo

The Charitable Bingo Operations Division is divided into three sections that collectively regulate Charitable Bingo activities in Texas:

- **Licensing Services**
- **Accounting Services**
- **Audit Services**

Functions of the Licensing Services Section

- Process original and renewal applications for conductor, lessor, distributor, manufacturer and system service provider license types to ensure all statutory and regulatory licensing requirements have been met
- Process temporary applications for organizations
- Process amendment applications for conductor and lessor licensees
- Process supplemental forms required for all license types
- Communicates with applicants to clear deficiencies before licenses are issued

Sections of Charitable Bingo^(Continued)

Types of Licenses Issued by the Licensing Services Section

- **Conductor** - An organization that conducts bingo. This represents the largest category of licensees in the Charitable Bingo industry in Texas. As of March 25, 2002, there were 1,451 licensed conductors in Texas.
- **Lessor** - An individual or organization that leases a location for the purpose of conducting a Charitable Bingo game. As of March 25, 2002, there were 468 licensed lessors in Texas.
- **Distributor** - An individual or organization that sells, distributes, or supplies equipment to organizations licensed to conduct Charitable Bingo in Texas. As of March 25, 2002, there were 16 licensed distributors in Texas.
- **Manufacturer** - An individual or organization that manufactures bingo equipment and sells to licensed distributors in Texas. As of March 25, 2002, there were 16 licensed manufacturers in Texas.
- **System Service Provider** - An individual or organization that provides integrated electronic systems for automated bingo services to be used by a licensed authorized organization. As of March 25, 2002, there were 2 licensed system service providers in Texas.

Functions of the Accounting Services Section

- Process quarterly tax returns and mail out billing notices
- Identify non-filers of quarterly tax returns to Audit Services Section for collection
- Communicate with licensees about liabilities and tax issues
- Monitor the charitable distributions of bingo revenue
- Prepare Bond Payment Demand Notices and collect remittances on delinquent accounts
- Process loan applications
- Calculate and remit allocation checks to local jurisdictions sharing the revenue from bingo
- Process incoming mail and fees for the Charitable Bingo Operations Division
- Conduct testing of bingo equipment and products
- Coordinate, track and participate in investigations
- Participate in hearings
- Develop and implement publications
- Assist with the development and maintenance of the Operator Training Program
- Research bingo and gaming trends
- Monitor division rules and procedures

Functions of the Audit Services Section

- Perform location verification inspections and pre-licensing interviews on original licensees
- Conduct assessment and assistance inspections
- Perform books and records inspection on each licensee
- Perform tax reviews on delinquent licensees
- Conduct compliance reviews and audits verifying adherence to the Bingo Enabling Act and Charitable Bingo Administrative Rules
- Conduct financial audits on licensees with serious discrepancies in their records
- Assist with security investigations
- Conduct tests on card-minding devices, pull-tab dispensers and system service provider software submitted to the Charitable Bingo Operations Division for approval
- Conduct Operator Training Programs





Charitable Bingo Statistics

Note On Charitable Bingo Statistics

The following pages contain Charitable Bingo statistical information from 1982-2001. Due to established reporting schedules, figures for 2002 will not be available until spring 2003.

Charitable Bingo Distributions

Charitable Bingo was legalized in Texas to enable Texas charities to generate money to be used to benefit needy or deserving persons in Texas or to initiate, perform or foster worthy public works in Texas or to further the erection or maintenance of public structures in the state.

Before the end of each calendar quarter, a licensed authorized organization must disburse, for charitable purposes, an amount not less than 35% of the organization's adjusted gross receipts, derived from Charitable Bingo activities from the preceding quarter, less the amount of authorized expenses, not to exceed 6% of the gross receipts. From 1982 to 2001, Charitable Bingo activities in Texas generated over \$682,453,000 in charitable distributions. *Chart 1, Charitable Bingo Distributions 1982 - 2001* presents charitable distributions from 1982 to 2001.

Charitable Bingo Distributions Compared to the Top 100 Foundations in Texas By Grants

A comparison of the Charitable Bingo distributions to the top 100 foundations in Texas by grants from 1982 to 2000 shows Charitable Bingo distributions ranked with the top 5 foundations from 1984 to 2000. Charitable Bingo generated over \$682,453,000 in charitable distributions from 1982 - 2001. *Chart 2, Comparison of Charitable Bingo Distributions To The Top 100 Foundations In Texas By Grants 1982 - 2000* shows that from 1982 to 2000, Charitable Bingo distributions compared to the top 100 foundations in Texas by grants, ranked in the top 5. Over the 14 years, Charitable Bingo ranked: #1 for 7 years, #2 for 4 years, #3 for 3 years, # 4 for 2 years and # 5 for 1 year.

Charitable Bingo Gross Receipts

For Charitable Bingo purposes, gross receipts are the total amount of money derived from the sale, rental, transfer, or use of bingo cards and entrance fees charged at the premises at which bingo is conducted. Charitable Bingo activities in Texas generated over \$9,834,614,000 in gross receipts from 1982 to 2001. Gross receipts form the foundation from which charitable distributions are derived. *Chart 3, Charitable Bingo Gross Receipts 1982 - 2001* shows gross receipts derived from Charitable Bingo activity from 1982 to 2001.

Charitable Bingo Prizes

Prizes From Playing Regular Bingo

A bingo prize may not have a value of more than \$750 for a single game. For regular bingo games, other than pull-tab bingo, a person may not offer or award on a single bingo occasion (a bingo occasion may not exceed four hours) prizes with an aggregate value of more than \$2,500. Regular bingo is played using paper or card-minding devices.

Prizes From Playing Pull-tab Bingo

Pull-tab bingo, often called instant bingo, is a popular form of bingo in Texas. Pull-tab bingo is played using an individual card with perforated break-open tabs, made from paper or paper products, with the face initially hidden from view to conceal numbers, letter or symbols.

For both regular and pull-tab bingo, over \$7,173,825,000 was paid in bingo prizes from 1982 - 2001. *Chart 4, Charitable Bingo Prizes Paid 1982 - 2001* shows prize pay-outs paid to Charitable Bingo players in Texas from 1982 - 2001.

Attendance At Charitable Bingo Occasions In Texas

From 1982 - 2001, attendance at Charitable Bingo games exceeded 484,756,000. Attendance peaked in 1991 and shows a decline from 1992 to 2001. *Chart 5, Charitable Bingo Attendance 1982 - 2001* shows attendance per year at Charitable Bingo occasions in Texas.

Charitable Bingo by County

Chart 6 Charitable Bingo Statistics by County for Year 2001 lists each county in which Charitable Bingo is conducted in Texas and the total charitable distributions, attendance, gross receipts and prizes for each county.

Charitable Bingo Allocations to Cities & Counties

The Charitable Bingo industry in Texas benefits not only players and charities, but also the citizens of Texas. Local jurisdictions benefit from Charitable Bingo activity in the form of allocations derived from Charitable Bingo prize fees. A county that imposed a gross receipts tax on the conduct of bingo as of January 1, 1993, is entitled to 50% of the prize fee collected under Section 2001.502 of the Bingo Enabling Act, on a prize awarded at a game conducted in the county. Likewise, a city that imposed a gross receipts tax on the conduct of bingo as of January 1, 1993, is entitled to 50% of the fee collected under Section 2001.502 of the Bingo Enabling Act on a prize awarded at a game conducted in the municipality.

If a county and city are both entitled to a share of the fee imposed by Section 2001.502 of the Bingo Enabling Act the county is entitled to 25% of the fee on a prize awarded at a game conducted in the county and the city is entitled to 25% of the fee on a prize awarded at a game conducted in the municipality.

Chart 7, Charitable Bingo Allocations to Cities and Counties 1982-2001 shows allocations to cities and counties in Texas from 1982 to 2001. *Chart 8, Charitable Bingo Tax and Prize Fee Allocations Texas Cities 1982 - 2001* shows tax and prize fee allocations alphabetically by city from 1982 through 2001. *Chart 9, Charitable Bingo Allocations Texas Counties 1982 - 2001* shows tax and prize fee allocations alphabetically by county from 1982 to 2001.

Operator Training Program

Section 2001.107 of the Bingo Enabling Act established the Operator Training Program as a requirement of maintaining a Charitable Bingo conductor's license in Texas. Charitable Bingo Administrative Rule 402.550 sets out the requirements of the program and requires the primary operator or an alternate operator to complete the training program every two years.

The program is designed to provide training in: (1) the requirements of the Bingo Enabling Act and Charitable Bingo Administrative rules, (2) conducting a bingo game, (3) record keeping requirements, (4) administration and operation of Charitable Bingo, (5) promotion of a bingo game, (6) the Bingo Advisory Committee and (7) general information about the license application process.

The first Operator Training Program was held March 1, 2000. Operator Training Programs are ongoing and held throughout the state each year. Since the inception of the Operator Training Program to February 28, 2002, 2,980 individuals have attended the training program. From May 16, 2000 to February 28, 2002, 2,501 individuals received surveys designed to access their opinion of the value of the Operator Training Program. Two thousand one hundred forty nine (2,149) or 86% of those attending the Operator Training Programs have completed the survey. Of those completing the survey, 97% found the Operator Training Program to be worthwhile.

There has been a decrease in the number of audit violations cited since the inception of the Operator Training Program. In FY2000, 81.9% of audits contained violations. In FY2001, that number dropped to 66.7%, resulting in a 19% decline in violations.

Assessment & Assistance Inspections

Assessment & Assistance Inspections were started January 1, 2000 and are ongoing. Auditors, who attend a bingo occasion being conducted by an authorized organization, perform these inspections. The auditors observe the conduct of the bingo occasion and meet with the operator to address any concerns and answer any questions she or he may have. The Assessment & Assistance Inspections provide an opportunity for auditor's to identify problem areas in the conduct and management of the bingo game and related activities. In addition, it is an avenue for the representative of the organization to ask any questions and receive guidance on the conduct of the games, record keeping and other issues they consider important. From January 1, 2000 to March 17, 2002, 1,065 Assessment & Assistance Inspections have been completed.

Customer Satisfaction

In 1994, as Charitable Bingo was being transitioned to the Texas Lottery Commission, an auditor representing the Charitable Bingo Operations Division of the Texas Lottery Commission visited every licensed conductor and lessor to introduce the Texas Lottery Commission. The visits were intended to introduce regional auditors to the licensed organizations and do a cursory review of the organizations books and records. The visits contributed to promoting a smooth transition from the Texas Alcoholic Beverage Commission and to show the licensees that the Charitable Bingo Operations Division considered customer service an important function.

Customer service is an important component of the culture of the Charitable Bingo Operations Division. The first survey to include an assessment of customer satisfaction was conducted in 1999. Customer satisfaction surveys are continually conducted at the Operator Training Programs and Assessment & Assistance Inspections that are ongoing throughout each year.

In October 1999, the first comprehensive licensee survey ever conducted by the Charitable Bingo Division was completed. The purpose of the survey was multi-faceted: designed to provide information on customer satisfaction, areas of bingo operations conductor's perceive problematic, game patterns, trends in game operations throughout the state, and other information relevant to improve Charitable Bingo operations in Texas.

A stratified random sample was drawn from the entire population of 1,547 conductors. Ten-percent (155) of the licensed conductors were drawn from the population. Conductor/lessor licensees were not excluded from the sample. The percent of organizations selected via random sample within each region ranged from 8% to 11%, resulting in an average of 10%. The survey instrument consisted of 33 multiple choice and open-ended questions. The surveys were conducted by telephone. Auditors conducted the surveys in Regions 1, 2, 3 and 4. A license examiner conducted the surveys in Region 5.

Of the 155 organizations surveyed, 104 responded resulting in a 67% response rate. Of the respondents, 100 were conductors and 4 were conductor/lessors. Of the 104 respondents, 86 (83%) of the individuals responding to the questions were primary operators, individuals who should be the most familiar with Charitable Bingo operations.

Responses to the questions dealing with customer service satisfaction were of particular interest. Combined *Excellent* and *Good* responses to these three questions were as follows:

Question	% Responding "Excellent" or "Good"
How would you rate the quality of service you receive from the Charitable Bingo Operations Division?	89%
In your interactions with the staff of the Charitable Bingo Operations Division are you treated courteously?	96%
How would you rate the response time of the Charitable Bingo Operations Division to your requests?	87%



The assumption was made that the high positive response rate to customer service satisfaction questions was attributable to the surveys being conducted by auditors, who routinely examine the bingo records of organizations and the lack of anonymity of the respondents. To determine if survey bias existed in the responses to customer service questions, the responses to these questions in Region 5 were compared to the responses from Regions 1, 2, 3 and 4. The comparison indicated no survey bias existed.

Assessment of the quality of customer service provided by the Charitable Bingo Operations Division continues to be tracked by surveys conducted at the Operator Training Program and Assessment & Assistance Inspections. The results of data from these surveys validate the findings in the October 1999 survey.

The following are the results from the ongoing surveys related to the quality of customer service:

Question	% Responding "Excellent" or "Good"
<p>Operator Training Program Survey - <i>How would you rate the quality of service you receive from the Charitable Bingo Operations Division?</i> This question has been included in the surveys since May 16, 2000. From May 16, 2000, to February 28, 2002, 2,486 individuals were given the survey instrument and 2,149 individuals completed the survey, resulting in an 86% response rate.</p>	95%
<p>Assessment & Assistance Interviews - <i>How would you rate the quality of service you receive from the Charitable Bingo Operations Division?</i> This question has been included in the Assessment & Assistance Interview surveys since September 1, 2001. From September 1, 2001 to March 17, 2002, 340 participants were given the survey instrument and 85 have returned the survey, resulting in a 25% response rate.</p>	96%

Average Licenses Pending

Pending licenses are those that are received by the Charitable Bingo Operations Division and are being processed but cannot be issued for various reasons. Each license application received is thoroughly reviewed to ensure compliance with the Bingo Enabling Act and Charitable Bingo Administrative Rules. From 1994 to 2001, the average daily pending licenses declined from 840 per day in 1994 to 178 per day in 2001 - a decline of 78%. We are very proud of this accomplishment and attribute it to a dedicated staff that strives to issue each application in a timely manner, the implementation of written procedures, revision of applications and forms, implementation of telephone and fax amendments, the ability of all staff of Charitable Bingo to communicate with each other and work together with the ultimate goal of resolving issues as quickly as possible, ongoing training of staff, and the ability of management and staff to work together to revise systems and procedures to expedite processing. *Chart 10 Average Licenses Pending 1994 - 2001* shows the decline per year in pending licenses.

Conductors by County

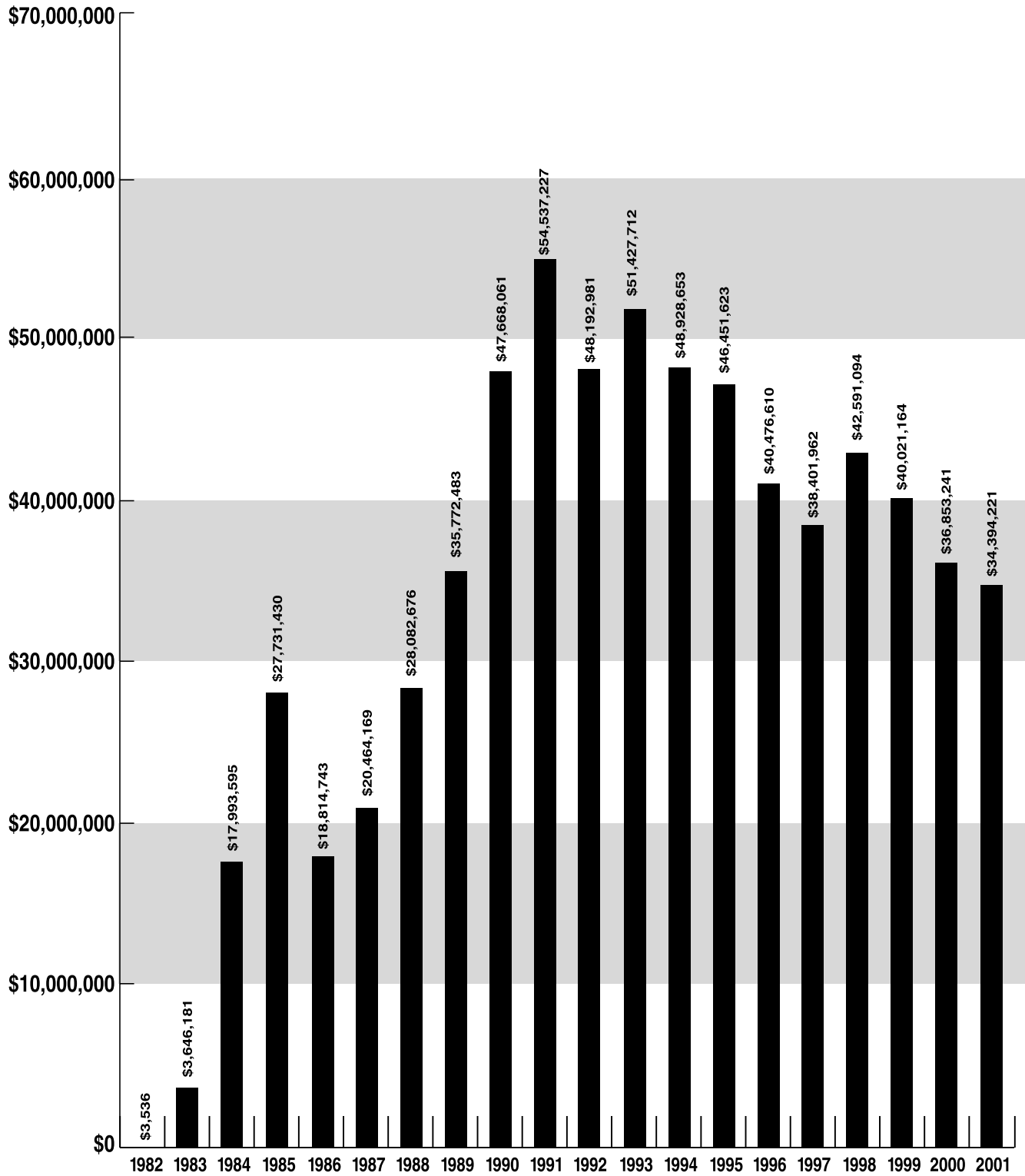
There are 254 counties in Texas, Charitable Bingo is played in 157 counties. *Chart 11, Number of Conductors by County* gives an overview of Charitable Bingo activity in Texas.



Charitable Bingo Charts

Chart 1

Charitable Bingo Distributions 1982 - 2001

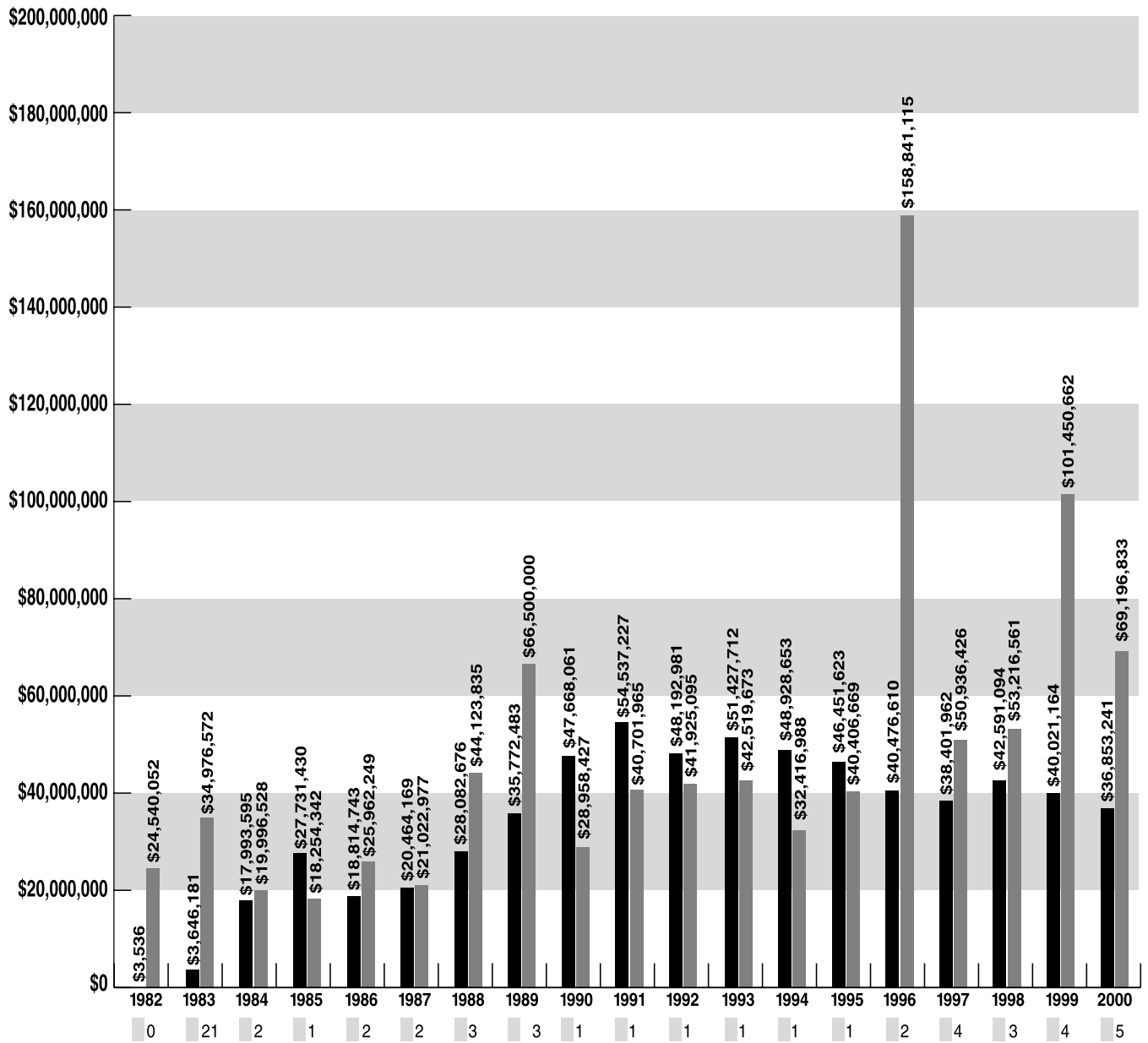


Note: Figures are as of 02/02/02 and are unaudited

Chart 2

Comparison of Charitable Bingo Distributions to Top 100 Foundations In Texas By Grants 1982 - 2000

Note: Bingo Figures Are Unaudited
Foundation Figures Provided By Regional Foundation Library Austin, TX

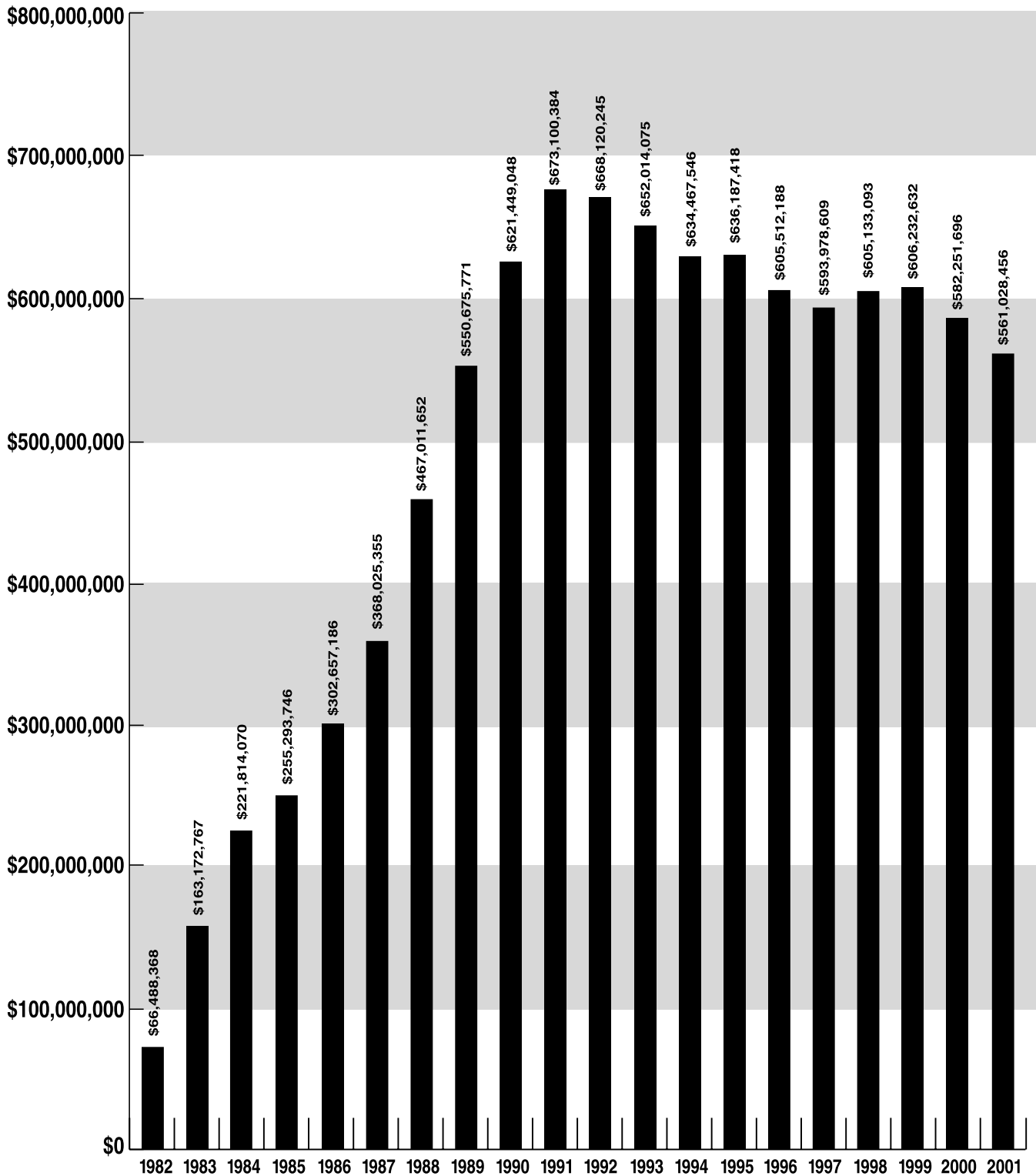


Year & Ranking of Charitable Bingo Within Top 100 Foundations

■ Bingo's Ranking ■ Bingo Charitable Distributions ■ Grants By #1 Ranking Foundation

Chart 3

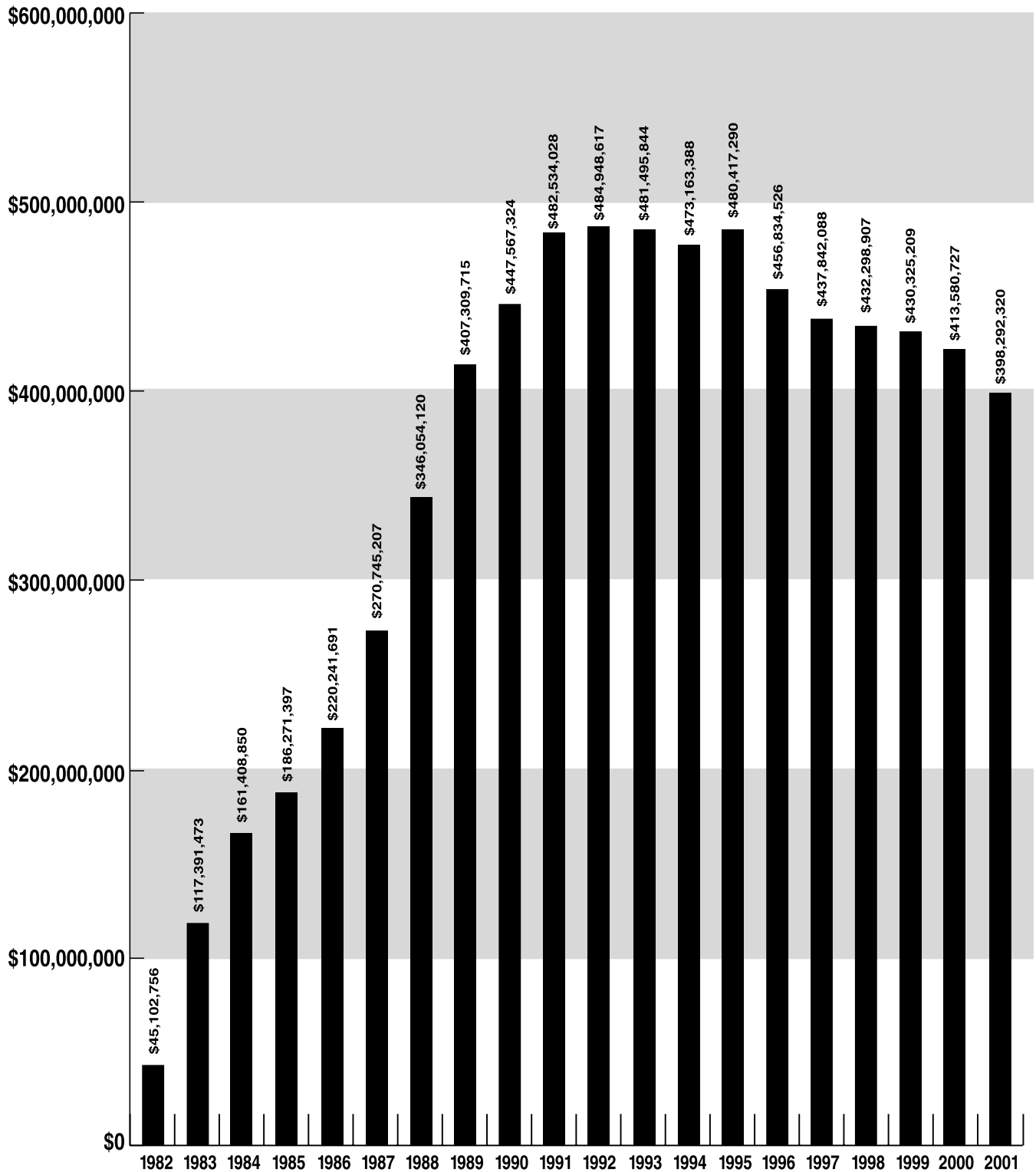
Charitable Bingo Gross Receipts 1982 - 2001



Note: Figures are as of 02/02/02 and are unaudited

Chart 4

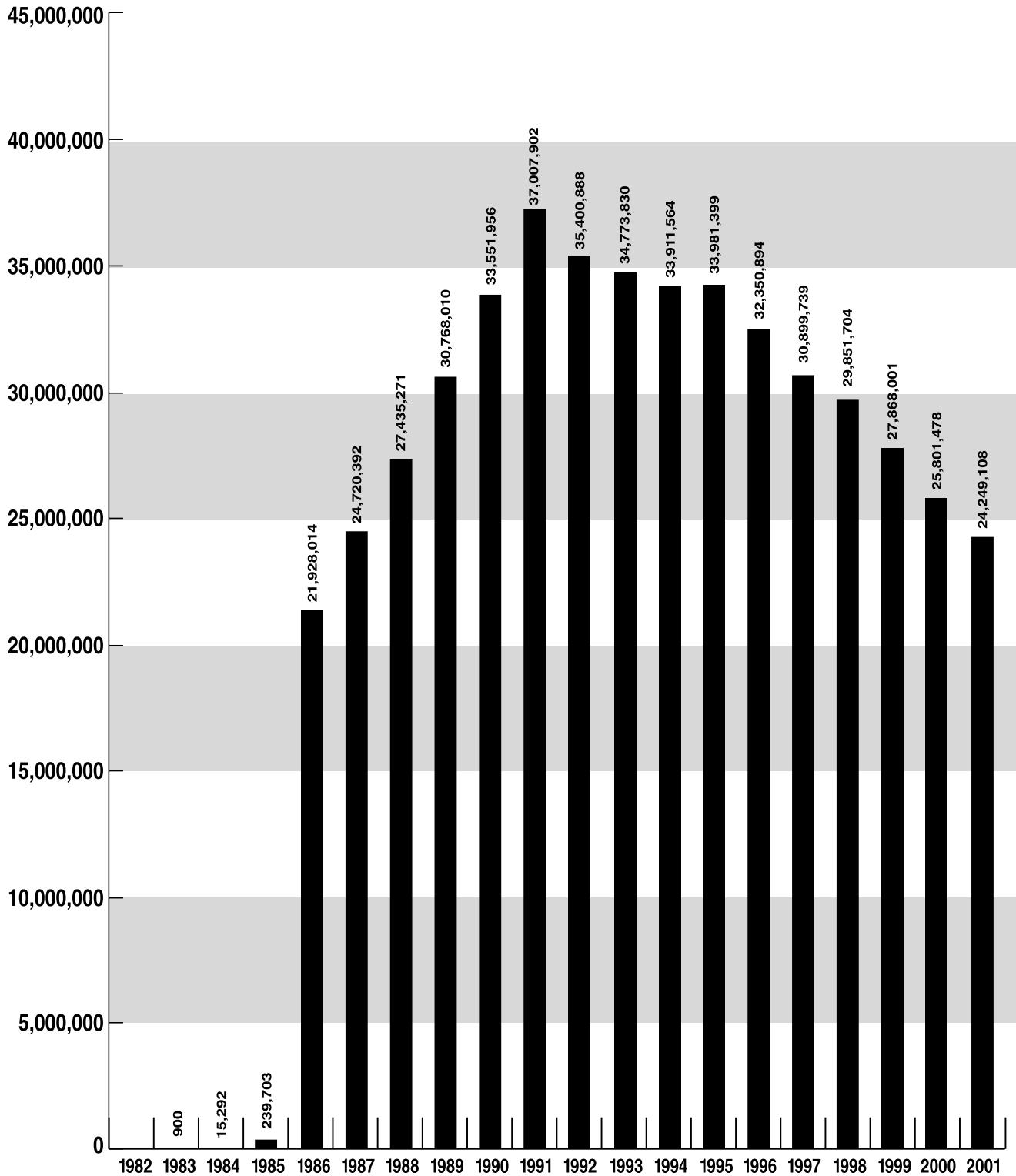
Charitable Bingo Prizes Paid 1982 - 2001



Note: Figures are as of 02/02/02 and are unaudited

Chart 5

Charitable Bingo Attendance 1982 - 2001



Note: Figures are as of 02/02/02 and are unaudited

Chart 6

Charitable Bingo Statistics By County for Year 2001

Figures are as of 02/02/02 and are unaudited

County	Charitable Distributions	Attendance	Gross Receipts	Total Prizes
Anderson	\$100,321	43,467	\$1,121,192	\$852,493
Andrews	\$38,567	5,940	\$186,537	\$135,407
Angelina	\$178,933	54,952	\$1,836,539	\$1,292,420
Aransas	\$142,351	20,221	\$578,493	\$402,393
Atascosa	\$18,713	23,046	\$632,697	\$500,150
Austin	\$75,551	32,636	\$504,269	\$347,633
Bandera	\$36,548	8,457	\$272,968	\$206,811
Bastrop	\$107,710	25,925	\$662,559	\$473,528
Baylor	\$2,976	1,463	\$39,979	\$28,305
Bee	\$112,320	37,752	\$539,370	\$385,001
Bell	\$1,902,177	891,427	\$22,527,777	\$16,275,423
Bexar	\$1,752,283	2,244,750	\$38,875,633	\$29,237,094
Blanco	\$0	270	\$732	\$200
Bosque	\$5,625	1,661	\$29,453	\$23,964
Bowie	\$321,494	174,222	\$5,713,976	\$3,881,883
Brazoria	\$299,215	136,742	\$3,724,200	\$2,609,606
Brazos	\$257,387	150,759	\$3,498,416	\$2,479,223
Brewster	\$17,156	7,742	\$166,878	\$136,398
Brown	\$228,989	95,803	\$2,455,640	\$1,816,964
Burleson	\$98,478	33,256	\$861,462	\$669,901
Burnet	\$22,235	43,245	\$1,649,388	\$1,384,472
Caldwell	\$65,534	34,332	\$1,176,963	\$850,303
Calhoun	\$30,600	20,845	\$491,523	\$399,730
Camerson	\$547,627	503,097	\$9,458,293	\$6,757,007
Carson	\$845	70	\$1,154	\$625
Castro	\$592	275	\$592	\$80
Chambers	\$8,759	5,167	\$189,791	\$143,035
Cherokee	\$0	458	\$17,678	\$15,364
Clay	\$7,500	1,172	\$22,002	\$15,920
Collin	\$62,267	162,651	\$4,694,376	\$3,403,144
Colorado	\$51,487	17,521	\$363,456	\$258,947
Comal	\$147,322	53,118	\$1,245,941	\$945,414
Comanche	\$8,641	15,795	\$480,084	\$375,053
Cooke	\$64,723	23,099	\$686,306	\$499,759
Coryell	\$253,434	98,858	\$3,486,456	\$2,534,886
Dallham	\$3,789	924	\$23,450	\$17,402
Dallas	\$3,049,295	2,833,046	\$70,664,647	\$49,821,355
Deaf Smith	\$71,478	25,045	\$507,455	\$390,646

County	Charitable Distributions	Attendance	Gross Receipts	Total Prizes
Denton	\$43,626	90,952	\$2,428,804	\$1,742,876
DeWitt	\$90,397	84,400	\$1,542,540	\$1,242,198
Dimmit	\$124,992	43,145	\$959,406	\$667,155
Donley	\$184	676	\$14,007	\$9,297
Duval	\$41,357	17,809	\$210,704	\$157,199
Eastland	\$2,398	7,214	\$156,010	\$135,503
Ector	\$911,419	548,701	\$13,193,902	\$9,513,853
Ellis	\$59,471	26,339	\$781,060	\$607,296
El Paso	\$285,129	197,817	\$5,373,598	\$3,958,833
Erath	\$82,477	43,711	\$1,278,267	\$796,450
Falls	\$5,271	300	\$6,982	\$2,557
Fayette	\$34,972	14,885	\$275,109	\$215,725
Fisher	\$6,991	3,352	\$80,824	\$63,640
Foard	\$3,005	841	\$13,723	\$10,790
Fort Bend	\$106,842	31,852	\$816,933	\$604,739
Franklin	\$139,288	44,316	\$1,491,906	\$1,092,313
Freeston	\$38,491	15,754	\$524,306	\$350,558
Frio	\$15,364	11,036	\$219,793	\$185,260
Galveston	\$380,662	306,435	\$7,495,394	\$5,346,112
Gillespie	\$28,015	7,231	\$173,396	\$127,547
Gonzales	\$4,441	2,696	\$65,460	\$53,023
Gray	\$31,190	9,572	\$187,822	\$140,592
Grayson	\$312,529	185,761	\$4,091,918	\$2,975,042
Gregg	\$102,378	125,490	\$3,672,217	\$2,793,032
Grimes	\$83,055	16,630	\$384,979	\$253,232
Guadalupe	\$391,078	119,436	\$2,823,749	\$2,031,656
Hamilton	\$2,604	1,086	\$17,957	\$12,077
Hardeman	\$8,374	1,553	\$44,654	\$25,563
Harris	\$2,931,319	2,500,030	\$54,308,144	\$37,283,046
Harrison	\$10,540	7,496	\$179,928	\$129,663
Haskell	\$14,000	4,579	\$95,024	\$76,632
Hays	\$34,312	14,002	\$329,004	\$261,362
Henderson	\$119,953	60,449	\$2,104,508	\$1,410,835
Hidalgo	\$1,526,907	1,050,919	\$16,000,038	\$10,472,061
Hill	\$82,453	21,647	\$923,820	\$732,350
Hood	\$50,829	7,615	\$237,813	\$175,721
Hopkins	\$111,052	36,046	\$1,672,648	\$1,301,610
Houston	\$67,609	23,817	\$725,944	\$594,518
Howard	\$216,969	96,920	\$2,630,763	\$1,779,095
Hunt	\$37,562	8,764	\$296,351	\$223,628
Hutchinson	\$57,407	9,273	\$288,768	\$200,332
Jack	\$11,200	1,720	\$53,178	\$41,133
Jackson	\$12,676	8,000	\$198,674	\$148,428
Jasper	\$36,037	1,800	\$72,360	\$59,885
Jefferson	\$780,736	440,699	\$9,103,918	\$6,179,176

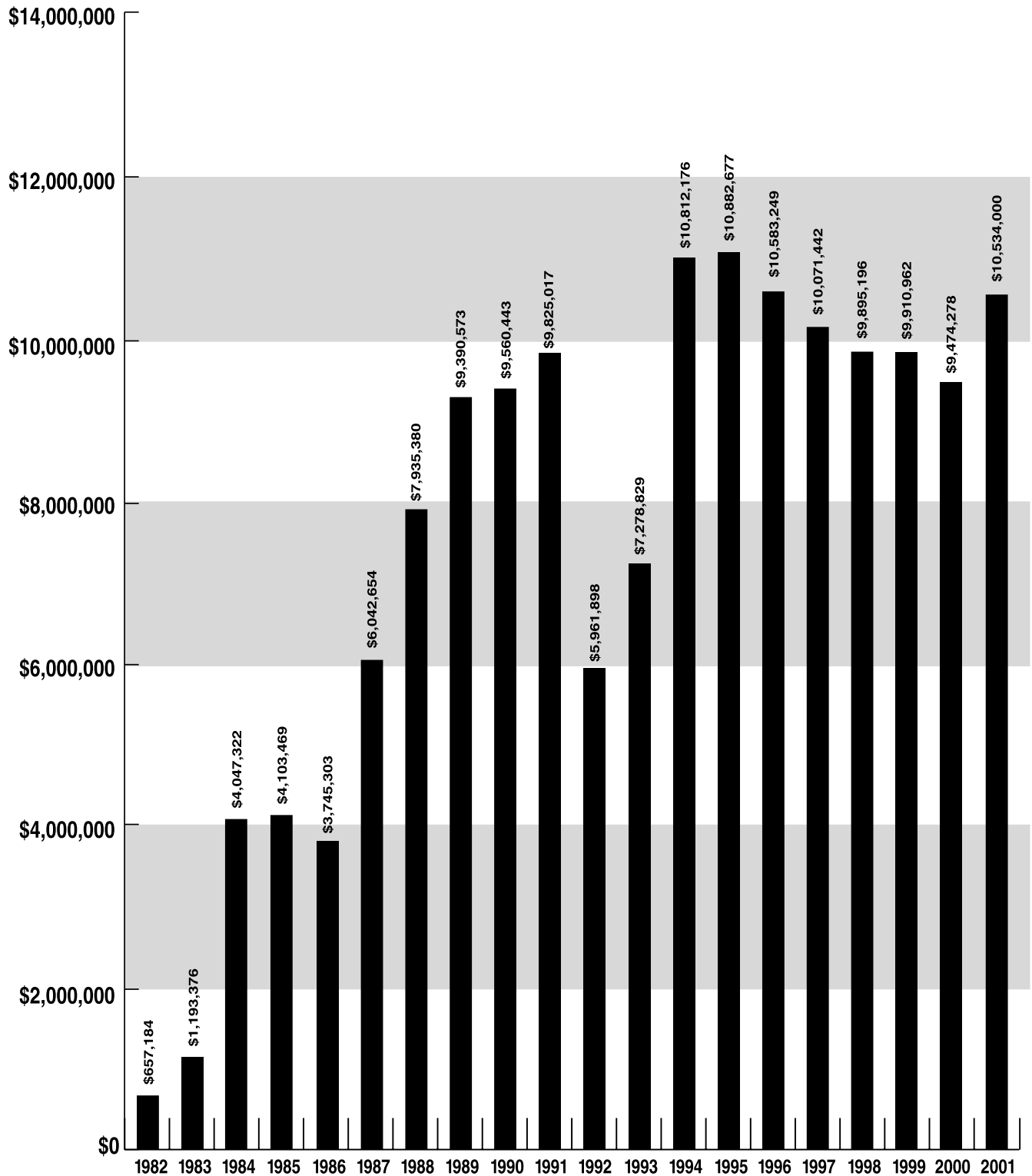
County	Charitable Distributions	Attendance	Gross Receipts	Total Prizes
Jim Hogg	\$4,570	8,771	\$163,662	\$118,847
Jim Wells	\$158,025	56,167	\$905,839	\$626,662
Johnson	\$155,024	73,711	\$2,425,031	\$1,662,525
Karnes	\$58,542	22,671	\$377,008	\$257,971
Kaufman	\$800	6,691	\$112,885	\$93,133
Kerr	\$194,683	35,584	\$1,592,577	\$1,155,133
Kinney	\$3,388	2,548	\$32,382	\$16,547
Kleberg	\$54,719	66,381	\$789,501	\$593,968
Lamar	\$191,987	118,372	\$4,338,103	\$3,077,208
LaSalle	\$450	440	\$4,686	\$6,450
Lavaca	\$92,661	41,946	\$1,021,966	\$756,461
Lee	\$10,838	5,891	\$95,825	\$72,635
Leon	\$20,727	4,716	\$108,816	\$89,819
Liberty	\$13,956	32,444	\$970,645	\$835,376
Limestone	\$12,900	7,626	\$222,717	\$168,166
Lipscomb	\$201	639	\$11,333	\$9,383
Live Oak	\$6,842	1,582	\$24,867	\$14,693
Llano	\$4,025	1,508	\$26,181	\$24,215
Lubbock	\$1,304,234	987,396	\$21,529,383	\$14,856,826
Lynn	\$37,681	21,240	\$410,634	\$342,855
McLennan	\$835,237	649,244	\$14,756,111	\$10,731,788
McCulloch	\$14,825	3,981	\$103,335	\$78,352
Madison	\$1,852	1,344	\$38,103	\$30,910
Marion	\$9,150	2,293	\$43,525	\$31,360
Matagorda	\$242,097	61,697	\$1,487,376	\$1,084,108
Maverick	\$77,669	25,066	\$448,870	\$365,000
Medina	\$75,180	13,936	\$210,048	\$124,920
Menard	\$4,048	1,027	\$23,645	\$16,965
Midland	\$205,001	167,084	\$5,402,797	\$3,835,214
Milam	\$87,722	42,531	\$870,521	\$689,305
Mitchell	\$0	0	\$0	\$0
Montague	\$71,732	11,945	\$486,281	\$346,849
Montgomery	\$368,377	128,735	\$4,170,169	\$3,135,227
Moore	\$31,920	6,713	\$164,733	\$111,506
Nacogdoches	\$41,068	18,481	\$530,492	\$384,696
Nolan	\$8,708	8,124	\$170,594	\$148,416
Nueces	\$446,657	800,087	\$13,590,467	\$9,627,687
Orange	\$31,063	13,675	\$390,066	\$336,975
Palo Pinto	\$151,919	26,573	\$1,052,982	\$781,802
Panola	\$9,170	2,827	\$76,799	\$57,777
Parker	\$14,291	30,577	\$791,710	\$577,699
Pecos	\$13,285	9,154	\$220,183	\$171,138
Polk	\$130,233	53,734	\$1,742,939	\$1,315,849
Potter	\$360,215	436,377	\$8,739,182	\$6,319,464
Presidio	\$800	782	\$13,932	\$12,421

County	Charitable Distributions	Attendance	Gross Receipts	Total Prizes
Real	\$729	258	\$3,358	\$2,370
Reeves	\$475	6,637	\$126,499	\$118,132
Refugio	\$14,850	6,116	\$114,666	\$93,921
Roberts	\$1,210	331	\$7,308	\$4,839
Robertson	\$0	100	\$1,015	\$1,150
Runnels	\$963	815	\$3,033	\$1,183
Sabine	\$22,710	5,500	\$108,689	\$75,638
San Patricio	\$130,018	46,943	\$1,095,065	\$855,227
Scurry	\$7,009	11,843	\$320,195	\$263,089
Shackelford	\$170	1,227	\$21,223	\$17,402
Smith	\$250,450	160,503	\$4,147,720	\$2,801,540
Starr	\$536,961	139,886	\$2,621,970	\$1,816,485
Stephens	\$17,274	2,798	\$86,984	\$64,689
Tarrant	\$2,334,298	2,659,048	\$69,689,461	\$49,581,008
Taylor	\$892,553	452,655	\$13,153,680	\$9,101,556
Terrell	\$0	0	\$0	\$0
Terry	\$0	0	\$0	\$0
Tom Green	\$116,864	113,966	\$3,496,508	\$2,384,854
Travis	\$1,554,298	940,832	\$23,861,747	\$16,439,916
Trinity	\$39,478	11,765	\$309,407	\$239,091
Upshur	\$16,389	3,708	\$34,113	\$21,507
Uvalde	\$32,726	21,652	\$325,068	\$283,446
Val Verde	\$335,720	102,118	\$2,060,635	\$1,433,367
Van Zandt	5,000	6,062	\$207,193	\$147,254
Victoria	\$192,051	247,991	\$4,444,090	\$3,073,907
Walker	\$56,115	20,540	\$622,434	\$499,615
Waller	\$0	0	\$0	\$0
Ward	\$4,922	2,138	\$62,086	\$53,490
Washington	\$48,445	25,593	\$521,462	\$374,961
Webb	\$623,792	482,120	\$6,010,570	\$3,821,875
Wharton	\$94,907	41,476	\$939,886	\$685,175
Wheeler	\$5,119	774	\$14,857	\$7,106
Wichita	\$862,823	340,320	\$10,966,716	\$7,417,633
Wilbarger	\$61,852	11,225	\$360,933	\$255,750
Williamson	\$754,149	178,081	\$5,184,665	\$3,655,532
Wilson	\$10,529	7,156	\$137,980	\$102,789
Winkler	\$37,000	7,382	\$271,338	\$202,359
Wise	\$3,710	1,855	\$73,395	\$58,916
Wood	\$73,850	28,183	\$756,238	\$559,430
Young	\$4,325	2,051	\$62,440	\$52,513
Zapata	\$19,154	24,524	\$497,399	\$375,272
Zavala	\$142,378	38,650	\$682,901	\$502,500
Total	\$34,394,221	24,249,108	\$561,028,456	\$398,292,320

Figures as of February 2, 2002

Chart 7

Charitable Bingo Allocations to Cities & Counties 1982 - 2001



Note: Figures are as of 03/01/02 and are unaudited

Chart 8

Charitable Bingo Tax and Prize Fee Allocations Texas Cities 1982-2001

Figures are as of 03/01/02 and are unaudited

City	Tax	Prize Fee	Total
ABILENE	\$179,256.92	\$782,649.98	\$961,906.90
ALEDO	\$415.73	\$0.00	\$415.73
ARLINGTON	\$745,000.47	\$1,032,867.27	\$1,777,867.74
ASHERTON	\$18,016.13	\$28,184.36	\$46,200.49
AUSTIN	\$1,026,567.63	\$1,856,623.58	\$2,883,191.21
AZLE	\$35,100.65	\$43,509.34	\$78,609.99
BAIRD	\$6,653.62	\$701.38	\$7,355.00
BALCH SPRINGS	\$60,627.71	\$85,953.97	\$146,581.68
BANDERA	\$2,382.81	\$19,414.38	\$21,797.19
BANGS	\$25,912.38	\$26,011.98	\$51,924.36
BAYTOWN	\$146,705.81	\$106,624.31	\$253,330.12
BEACH CITY	\$3.33	\$0.00	\$3.33
BEAUMONT	\$660,772.09	\$585,926.60	\$1,246,698.69
BEDFORD	\$21,307.05	\$36,164.29	\$57,471.34
BELLMEAD	\$55,194.58	\$110,451.54	\$165,646.12
BENBROOK	\$271,995.47	\$296,683.72	\$568,679.19
BIG SPRING	\$122,475.29	\$418,096.75	\$540,572.04
BIG WELLS	\$71,746.10	\$82,858.99	\$154,605.09
BISHOP	\$15,280.21	\$16,848.68	\$32,128.89
BOERNE	\$1,598.94	\$2,146.41	\$3,745.35
BOWIE	\$3,689.11	\$31,619.51	\$35,308.62
BRACKETTVILLE	\$0.00	\$1,745.99	\$1,745.99
BROOKSHIRE	\$5.21	\$0.00	\$5.21
BROWDELL	\$11,872.14	\$17,053.06	\$28,925.20
BROWNFIELD	\$17,595.12	\$8,526.61	\$26,121.73
BROWNSVILLE	\$456,240.89	\$439,853.63	\$896,094.52
BROWNWOOD	\$18,433.39	\$54,808.20	\$73,241.59
BRYAN	\$426,055.32	\$523,807.45	\$949,862.77
BUDA	\$57.35	\$5,540.63	\$5,597.98
BURKBURNETT	\$66,356.65	\$46,184.44	\$112,541.09
BURLESON	\$9,528.73	\$0.00	\$9,528.73
CAMP WOOD	\$184.15	\$5,247.22	\$5,431.37
CARRIZO SPRINGS	\$23,036.58	\$26,682.90	\$49,719.48
CARROLLTON	\$3,019.29	\$36.94	\$3,056.23
CIBOLO	\$1,237.07	\$0.00	\$1,237.07
CISCO	\$0.00	\$4,036.78	\$4,036.78
CLEBURNE	\$13,493.70	\$131,245.70	\$144,739.40

City	Tax	Prize Fee	Total
CLINT	\$3,736.05	\$0.00	\$3,736.05
CLUTE	\$180,212.37	\$308,146.62	\$488,358.99
COLLEGE STATION	\$0.00	\$3,212.58	\$3,212.58
COLORADO CITY	\$14,230.28	\$7,799.42	\$22,029.70
COMANCHE	\$55,066.26	\$39,669.39	\$94,735.65
CONROE	\$20,574.51	\$99,364.45	\$119,938.96
CONVERSE	\$179,473.78	\$187,387.60	\$366,861.38
COPPERAS COVE	\$144,044.72	\$415,542.04	\$559,586.76
CORPUS CHRISTI	\$894,865.39	\$1,107,559.66	\$2,002,425.05
CROWLEY	\$16,533.16	\$11,485.72	\$28,018.88
CRYSTAL CITY	\$84,552.23	\$49,949.69	\$134,501.92
DALLAS	\$3,583,976.67	\$3,832,104.25	\$7,416,080.92
DENISON	\$36,240.15	\$99,178.19	\$135,418.34
DENTON	\$202,538.77	\$200,417.89	\$402,956.66
DEVINE	\$5,778.32	\$12,859.38	\$18,637.70
DICKINSON	\$21,509.20	\$55,403.40	\$76,912.60
DONNA	\$455.34	\$0.00	\$455.34
EL PASO	\$1,202,935.18	\$627,406.95	\$1,830,342.13
ELMENDORF	\$0.00	\$40.63	\$40.63
EULESS	\$85,973.08	\$11,346.07	\$97,319.15
EVERMAN	\$108,205.15	\$53,039.36	\$161,244.51
FAIRFIELD	\$45,424.84	\$41,644.48	\$87,069.32
FARMERS BRANCH	\$23,779.50	\$30,979.02	\$54,758.52
FATE	\$53,113.84	\$11,610.04	\$64,723.88
FORT WORTH	\$2,470,946.86	\$2,848,490.85	\$5,319,437.71
FREEPORT	\$132,486.43	\$106,348.47	\$238,834.90
GALVESTON	\$167,410.27	\$225,142.70	\$392,552.97
GARLAND	\$696,133.07	\$623,643.13	\$1,319,776.20
GRAND PRAIRIE	\$68,925.29	\$202,331.29	\$271,256.58
GUN BARREL CITY	\$25,146.80	\$829.35	\$25,976.15
HALTOM CITY	\$129,527.10	\$92,549.93	\$222,077.03
HARKER HEIGHTS	\$263,778.18	\$430,768.77	\$694,546.95
HARLINGEN	\$201,360.25	\$236,669.83	\$438,030.08
HELOTES	\$768.88	\$16,721.81	\$17,490.69
HEMPSTEAD	\$10,778.96	\$275.60	\$11,054.56
HEWITT	\$6,340.31	\$18,055.01	\$24,395.32
HIDALGO	\$23.47	\$0.00	\$23.47
HILLSBORO	\$178,046.41	\$124,874.68	\$302,921.09
HOLLAND	\$0.00	\$3,655.97	\$3,655.97
HOUSTON	\$2,770,847.60	\$2,395,038.21	\$5,165,885.81
HUMBLE	\$106,535.02	\$194,776.59	\$301,311.61
HURST	\$342,242.52	\$678,044.96	\$1,020,287.48

City	Tax	Prize Fee	Total
INGLESIDE	\$12,260.90	\$26,013.86	\$38,274.76
IRVING	\$443,764.10	\$490,675.33	\$934,439.43
JONESTOWN	\$1,358.67	\$301.38	\$1,660.05
KATY	\$3,967.53	\$0.00	\$3,967.53
KAUFMAN	\$2,610.43	\$1,152.68	\$3,763.11
KILLEEN	\$196,039.01	\$834,091.05	\$1,030,130.06
KINGSVILLE	\$84,622.57	\$95,587.29	\$180,209.86
KIRBY	\$49,467.58	\$52,214.30	\$101,681.88
LA FERIA	\$0.00	\$384.24	\$384.24
LA MARQUE	\$58,102.52	\$54,588.80	\$112,691.32
LA PORTE	\$86,968.44	\$115,273.86	\$202,242.30
LAKE WORTH	\$543.51	\$84,316.79	\$84,860.30
LAMPASAS	\$4,307.78	\$4,109.99	\$8,417.77
LANCASTER	\$101,453.07	\$219,084.19	\$320,537.26
LAREDO	\$372,810.73	\$419,009.89	\$791,820.62
LEAGUE CITY	\$140,041.81	\$223,410.71	\$363,452.52
LITTLE RIVER ACAD	\$9,260.25	\$19,878.53	\$29,138.78
LONGVIEW	\$66,005.17	\$327,957.80	\$393,962.97
LUBBOCK	\$1,028,390.98	\$1,414,409.32	\$2,442,800.30
LULING	\$5,724.63	\$4,431.28	\$10,155.91
MARBLE FALLS	\$6,334.64	\$22,654.34	\$28,988.98
MERCEDES	\$37,146.09	\$40,442.28	\$77,588.37
MERKEL	\$82,442.49	\$0.00	\$82,442.49
MESQUITE	\$261,366.30	\$188,712.14	\$450,078.44
MEXIA	\$22,510.31	\$40,816.47	\$63,326.78
MIDLAND	\$268,637.15	\$433,585.35	\$702,222.50
MISSION	\$37,655.00	\$13,608.50	\$51,263.50
MUSTANG	\$42,359.19	\$215.00	\$42,574.19
NOCONA	\$819.69	\$3,950.83	\$4,770.52
NORTH CLEVELAND	\$76,651.89	\$59,652.94	\$136,304.83
NORTH RICHLAND HILLS	\$93,931.65	\$94,323.06	\$188,254.71
ODESSA	\$193,021.59	\$693,259.91	\$886,281.50
ORANGE	\$126,395.14	\$53,185.45	\$179,580.59
PALACIOS	\$16,037.81	\$36,796.19	\$52,834.00
PARIS	\$126,450.96	\$488,539.76	\$614,990.72
PASADENA	\$646,550.12	\$716,487.17	\$1,363,037.29
PHARR	\$136,965.62	\$180,809.45	\$317,775.07
PLANO	\$400,151.09	\$804,722.20	\$1,204,873.29
POST	\$14,340.26	\$14,310.59	\$28,650.85
PRESIDIO	\$20.17	\$3,345.96	\$3,366.13
RICHARDSON	\$204,235.13	\$369,267.00	\$573,502.13
RISING STAR	\$1,463.66	\$12,574.64	\$14,038.30

City	Tax	Prize Fee	Total
RIVER OAKS	\$0.00	\$7.20	\$7.20
ROBSTOWN	\$69,390.88	\$55,172.30	\$124,563.18
ROMA LOS SAENZ	\$0.00	\$63,616.04	\$63,616.04
ROUND ROCK	\$14,849.09	\$170,674.51	\$185,523.60
ROWLETT	\$42.49	\$0.00	\$42.49
SAN ANGELO	\$303,080.82	\$274,812.44	\$577,893.26
SAN ANTONIO	\$1,981,654.64	\$2,660,133.82	\$4,641,788.46
SAN BENITO	\$29,703.93	\$27,659.46	\$57,363.39
SAN JUAN	\$253.64	\$85.16	\$338.80
SAN SABA	\$0.00	\$8,774.21	\$8,774.21
SANSOM PARK	\$2,398.31	\$2,120.17	\$4,518.48
SANTA FE	\$178.17	\$0.00	\$178.17
SCHERTZ	\$31,598.03	\$34,836.60	\$66,434.63
SEAGRAVES	\$162.95	\$0.00	\$162.95
SEGUIN	\$91,480.55	\$113,910.69	\$205,391.24
SELMA	\$1,288.52	\$3,460.54	\$4,749.06
SEVEN POINTS	\$242,463.16	\$255,266.52	\$497,729.68
SEYMOUR	\$855.04	\$0.00	\$855.04
SHERMAN	\$69,363.10	\$195,200.29	\$264,563.39
SLATON	\$5,985.11	\$1,238.78	\$7,223.89
SOMERVILLE	\$72,648.93	\$52,723.73	\$125,372.66
SOUTH HOUSTON	\$156,197.45	\$429,598.04	\$585,795.49
TEMPLE	\$166,131.87	\$265,800.30	\$431,932.17
TOMBALL	\$10,150.79	\$42,316.63	\$52,467.42
TRINIDAD	\$28,637.44	\$17,545.60	\$46,183.04
TUSCOLA	\$1,358.75	\$4,858.59	\$6,217.34
TYE	\$196,077.56	\$105,445.54	\$301,523.10
TYLER	\$256,766.58	\$408,789.91	\$665,556.49
UHLAND	\$0.00	\$27.38	\$27.38
UNIVERSAL CITY	\$45,751.79	\$68,280.76	\$114,032.55
UVALDE	\$53,518.06	\$56,867.89	\$110,385.95
VICTORIA	\$253,896.01	\$338,155.90	\$592,051.91
WACO	\$681,273.11	\$910,896.70	\$1,592,169.81
WATAUGA	\$17,661.18	\$5,247.40	\$22,908.58
WESLACO	\$96,251.79	\$203,324.65	\$299,576.44
WEST	\$18,101.19	\$10,886.44	\$28,987.63
WEST LAKE HILLS	\$1,423.71	\$0.00	\$1,423.71
WEST TAWAKONI	\$32,056.07	\$47,556.07	\$79,612.14
WHITE SETTLEMENT	\$37,307.01	\$170,358.26	\$207,665.27
WICHITA FALLS	\$896,734.84	\$1,465,879.55	\$2,362,614.39
Total Texas Cities	\$30,382,212.02	\$39,362,149.16	\$69,744,361.18

Chart 9

Charitable Bingo Allocations Texas Counties 1982-2001

Figures are as of 03/01/02 and are unaudited

County	Tax	Prize Fee	Total
ANDREWS	\$177.16	\$0.00	\$177.16
ARANSAS	\$38,858.91	\$0.00	\$38,858.91
BASTROP	\$12,991.53	\$88,673.24	\$101,664.77
BELL	\$867,112.52	\$2,080,493.03	\$2,947,605.55
BEXAR	\$2,897,966.90	\$3,555,933.29	\$6,453,900.19
BLANCO	\$418.37	\$732.82	\$1,151.19
BOSQUE	\$8,258.59	\$15,326.64	\$23,585.23
BOWIE	\$408,069.45	\$956,427.58	\$1,364,497.03
BRAZORIA	\$3,195.47	\$0.00	\$3,195.47
BROWN	\$145,381.55	\$280,290.60	\$425,672.15
BURNET	\$51,954.36	\$135,035.53	\$186,989.89
CALDWELL	\$19,721.81	\$178,239.82	\$197,961.63
CAMERON	\$782,333.15	\$843,484.94	\$1,625,818.09
CASTRO	\$0.00	\$88.89	\$88.89
CLAY	\$0.00	\$1,814.24	\$1,814.24
COLEMAN	\$9,744.93	\$4,932.41	\$14,677.34
COMAL	\$169,232.88	\$233,605.28	\$402,838.16
COMANCHE	\$51,522.09	\$48,654.04	\$100,176.13
DALLAS	\$6,171,742.63	\$6,543,279.20	\$12,715,021.83
DEAF SMITH	\$59,123.97	\$82,211.97	\$141,335.94
DENTON	\$181,600.99	\$210,044.92	\$391,645.91
EASTLAND	\$6,116.63	\$32,842.12	\$38,958.75
ECTOR	\$1,009,450.06	\$1,298,367.17	\$2,307,817.23
EL PASO	\$1,369,489.70	\$661,472.10	\$2,030,961.80
ELLIS	\$89,010.72	\$122,959.31	\$211,970.03
FREESTONE	\$55,988.13	\$41,643.88	\$97,632.01
FRIO	\$44,588.71	\$45,507.06	\$90,095.77
GALVESTON	\$595,154.00	\$780,349.14	\$1,375,503.14
GILLESPIE	\$6,556.63	\$27,656.35	\$34,212.98
GOLIAD	\$2,688.90	\$875.63	\$3,564.53
GRAY	\$6,285.07	\$30,662.12	\$36,947.19
GRAYSON	\$469,633.28	\$294,388.68	\$764,021.96
GREGG	\$66,729.41	\$351,884.50	\$418,613.91
GUADALUPE	\$216,079.27	\$257,848.57	\$473,927.84
HARRIS	\$5,867,052.18	\$4,692,867.91	\$10,559,920.09
HIDALGO	\$1,517,567.74	\$1,784,723.47	\$3,302,291.21
JACKSON	\$11,292.97	\$29,446.48	\$40,739.45

County	Tax	Prize Fee	Total
JASPER	\$1,131.02	\$0.00	\$1,131.02
KARNES	\$74,153.50	\$59,915.45	\$134,068.95
KAUFMAN	\$7,500.82	\$159,690.14	\$167,190.96
KENDALL	\$4,829.36	\$5,056.09	\$9,885.45
KINNEY	\$646.61	\$1,745.80	\$2,392.41
KLEBERG	\$103,555.15	\$95,866.94	\$199,422.09
LAMPASAS	\$8,879.89	\$4,109.85	\$12,989.74
LIBERTY	\$215,900.42	\$358,041.70	\$573,942.12
LUBBOCK	\$1,314,154.37	\$1,530,151.97	\$2,844,306.34
LYNN	\$73,573.01	\$104,615.04	\$178,188.05
MAVERICK	\$24,540.20	\$0.00	\$24,540.20
MCLENNAN	\$1,031,760.86	\$1,205,337.29	\$2,237,098.15
MIDLAND	\$291,253.41	\$433,581.11	\$724,834.52
MONTAGUE	\$17,391.07	\$42,615.09	\$60,006.16
MONTGOMERY	\$597,692.42	\$492,045.46	\$1,089,737.88
NOLAN	\$43,586.04	\$49,443.34	\$93,029.38
NUECES	\$1,130,871.67	\$1,196,699.52	\$2,327,571.19
ORANGE	\$202,549.07	\$87,693.85	\$290,242.92
PARKER	\$16,125.60	\$128,818.25	\$144,943.85
PECOS	\$12,210.24	\$29,567.60	\$41,777.84
POTTER	\$1,174,050.27	\$1,466,254.22	\$2,640,304.49
RANDALL	\$157.23	\$15.39	\$172.62
REEVES	\$67,056.47	\$43,949.35	\$111,005.82
ROBERTSON	\$3,610.68	\$12,970.84	\$16,581.52
SAN PATRICIO	\$110,002.04	\$185,285.46	\$295,287.50
SMITH	\$335,505.78	\$481,533.06	\$817,038.84
STEPHENS	\$11,044.81	\$13,853.63	\$24,898.44
TARRANT	\$4,629,005.42	\$5,629,926.10	\$10,258,931.52
TAYLOR	\$292,195.84	\$951,912.83	\$1,244,108.67
TERRY	\$31,901.90	\$8,526.51	\$40,428.41
TOM GREEN	\$213,549.24	\$330,428.60	\$543,977.84
TRAVIS	\$1,211,000.61	\$1,948,683.37	\$3,159,683.98
UPSHUR	\$875.56	\$12,717.70	\$13,593.26
VAL VERDE	\$112,364.17	\$292,563.62	\$404,927.79
VICTORIA	\$369,286.21	\$354,579.41	\$723,865.62
WALLER	\$14,630.72	\$1,555.84	\$16,186.56
WEBB	\$430,649.77	\$419,006.29	\$849,656.06
WILBARGER	\$11,801.76	\$52,863.33	\$64,665.09
WILLACY	\$11,044.73	\$0.00	\$11,044.73
WILLIAMSON	\$234,915.30	\$536,682.13	\$771,597.43
WINKLER	\$28,636.36	\$41,321.11	\$69,957.47
Total Texas Counties	\$37,678,680.26	\$44,482,386.21	\$82,161,066.47

Chart 10

Average Licenses Pending 1994-2001

Figures as of 12/31/01 and are unaudited

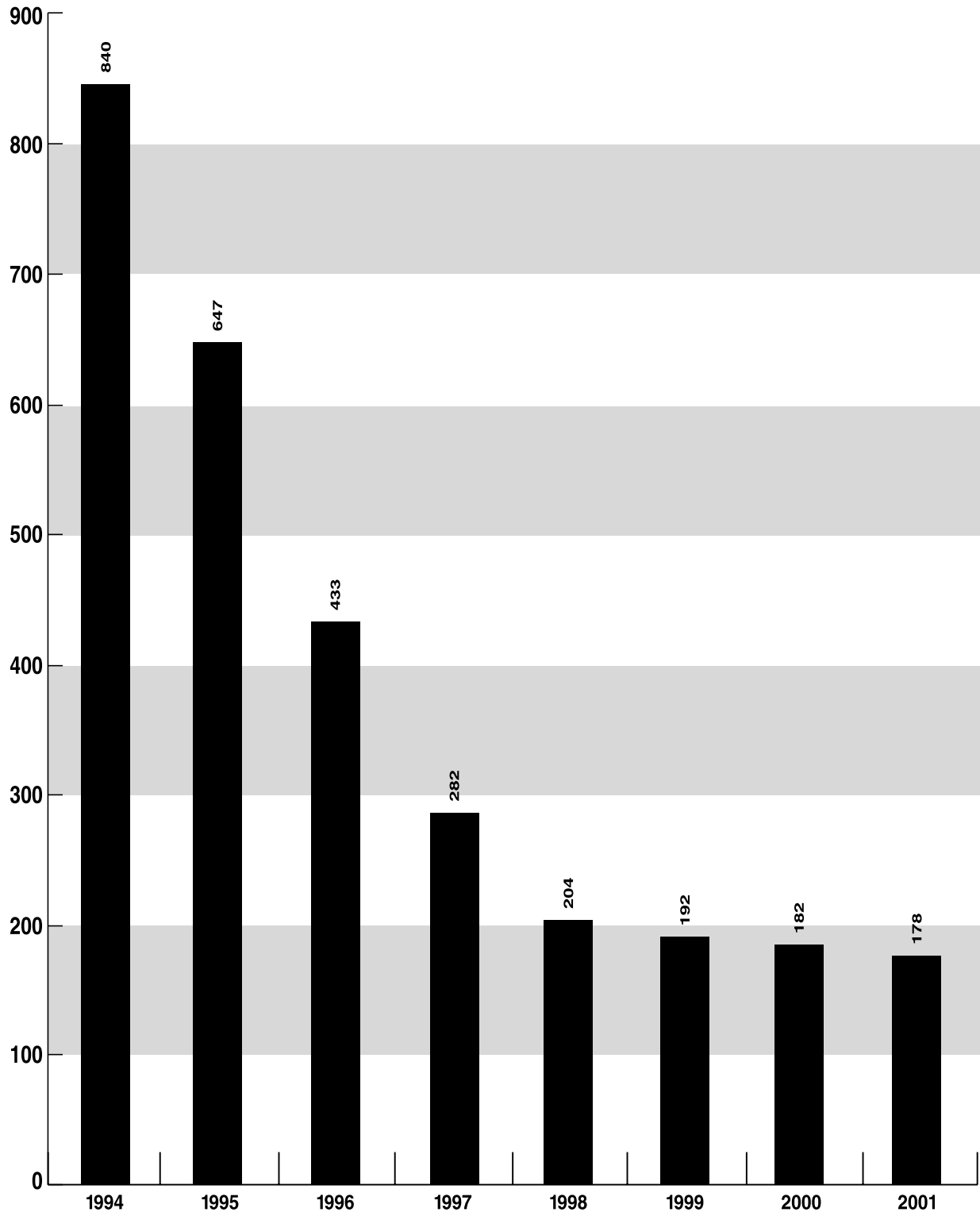


Chart 11

Number of Conductors By County

Figures as of August 2001 and are unaudited

