





# INTEROFFICE MEMO

*Sergio Rey, Acting Deputy Executive Director    LaDonna Castañuela, Charitable Bingo Operations Director*

**To:** Robert Rivera, Chairman  
Cindy Fields, Commissioner  
Mark A. Franz, Commissioner  
Jamey Steen, Commissioner

**From:** Sergio Rey, Acting Deputy Executive Director

A handwritten signature in blue ink, appearing to read "Sergio Rey".

**Date:** April 22, 2025

**Re:** Report and discussion on lottery sales, revenue transfers to the State, and the agency's financials

---

## **Lottery Sales**

Attached is the detailed weekly sales summary for the week ending April 12, 2025. A summary sales performance memo and the detailed weekly sales summary for the week ending April 26<sup>th</sup> will be provided at the April 29<sup>th</sup> meeting.

## **Revenue Transfers**

In Fiscal Year 2025, the total accrued revenue transfer to the State through March 31 is \$949 million. Of the total amount transferred to the State from sales, \$887.5 million was transferred to the Foundation School Fund and \$17.3 million was transferred to the Texas Veterans Commission. The remaining \$44.3 million transferred from unclaimed prizes.

The amount transferred to the Foundation School Fund from sales represents a 13.8% decrease, or \$122.7 million less than the total amount transferred in Fiscal Year 2024.

To date, cumulative accrued revenue transfers to the Foundation School Fund are \$34.7 billion and cumulative revenue transfer to the State are \$40.7 billion.

## **Agency's Budget Status**

The FY 2025 Method of Financing budget summary as of February 28, 2025, is attached for your information. The Commission's Lottery Account budget for FY 2025 is \$336.3 million. Of this amount 76.8% was expended and encumbered through the end of the second quarter. The Bingo Operations budget, funded by General Revenue, is \$2.6 million with 89.8% expended and encumbered through the end of the second quarter.

If you have questions or need additional information, please contact me at 512-344-5426.

Attachments: A - Weekly Sales Summary (April 12, 2025)  
B - Transfers & Allocations/Cumulative Summary (March 2025)  
C - FY 25 Budget Summary – Second Quarter



## WEEKLY SALES SUMMARY

Unaudited

**Week Ending: 4/12/2025**

Texas Lottery Commission  
Fiscal Year to Date Sales Comparison  
Unaudited

Through the Week Ending: 4/12/2025 (32 Weeks)

Sales by Game	FY 2023*	FY 2024**	FY 2025	\$ Change		% Change	
				FY 2025 to FY 2023	FY 2025 to FY 2024	FY 2025 to FY 2023	FY 2025 to FY 2024
Scratch Tickets	\$ 4,229,718,345	\$ 4,130,962,773	\$ 4,050,665,539	\$ -179,052,806	\$ -80,297,234	-4.2%	-1.9%
Lotto Texas	112,445,026	86,566,569	106,073,194	-6,371,832	19,506,625	-5.7%	22.5%
Lotto Extra	34,432,780	30,847,520	36,706,017	2,273,237	5,858,497	6.6%	19.0%
Pick 3	166,058,591	164,796,893	161,426,169	-4,632,422	-3,370,724	-2.8%	-2.0%
Pick 3 Fireball	16,961,738	17,938,616	19,073,619	2,111,882	1,135,004	12.5%	6.3%
Cash Five	31,514,425	32,252,456	30,259,224	-1,255,201	-1,993,232	-4.0%	-6.2%
Texas Two Step	40,759,777	37,034,914	39,846,415	-913,362	2,811,501	-2.2%	7.6%
Mega Millions	257,180,127	199,200,914	198,708,740	-58,471,387	-492,174	-22.7%	-0.2%
Megaplier	47,234,208	39,355,495	38,579,220	-8,654,988	-776,275	-18.3%	-2.0%
MM Just the Jackpot	869,496	611,546	579,198	-290,298	-32,348	-33.4%	-5.3%
Daily 4	76,814,600	79,029,674	79,821,724	3,007,124	792,050	3.9%	1.0%
Daily 4 Fireball	14,969,017	16,608,143	17,454,572	2,485,556	846,430	16.6%	5.1%
Powerball	344,375,552	376,412,118	163,004,526	-181,371,026	-213,407,592	-52.7%	-56.7%
Power Play	63,580,505	72,649,145	34,229,538	-29,350,967	-38,419,607	-46.2%	-52.9%
All or Nothing	31,463,166	33,565,560	29,442,239	-2,020,927	-4,123,321	-6.4%	-12.3%
<b>Total</b>	<b>\$ 5,468,377,351</b>	<b>\$ 5,317,832,334</b>	<b>\$ 5,005,869,934</b>	<b>\$ -462,507,418</b>	<b>\$ -311,962,401</b>	<b>-8.5%</b>	<b>-5.9%</b>

\*3 extra days

\*\*2 extra days

Texas Lottery Commission  
**Fiscal Year to Date Cumulative Average Sales Comparison**  
 Unaudited

Through the Week Ending 4/12/2025

Sales by Game	FY 2023		FY 2024		FY 2025
Scratch Tickets	\$	18,633,120	\$	18,278,596	\$ 18,083,328
Lotto Texas		495,353		383,038	473,541
Lotto Extra		151,686		136,493	163,866
Pick 3		731,536		729,190	720,653
Pick 3 Fireball		74,721		79,374	85,150
Cash Five		138,830		142,710	135,086
Texas Two Step		179,558		163,871	177,886
Mega Millions		1,132,952		881,420	887,093
Megaplier		208,080		174,139	172,229
MM Just the Jackpot		3,830		2,706	2,586
Daily 4		338,390		349,689	356,347
Daily 4 Fireball		65,943		73,487	77,922
Powerball		1,517,073		1,665,540	727,699
Power Play		280,090		321,456	152,810
All or Nothing		138,604		148,520	131,439
<b>Total</b>	<b>\$</b>	<b>24,089,768</b>	<b>\$</b>	<b>23,530,232</b>	<b>\$ 22,347,634</b>

4/15/2023  
227 days

4/13/2024  
226 days

4/12/2025  
224 days

**Texas Lottery Commission**  
**Fiscal Year Over Year Change in Sales**  
**Unaudited**  
**FY 2025 Compared to FY 2024**

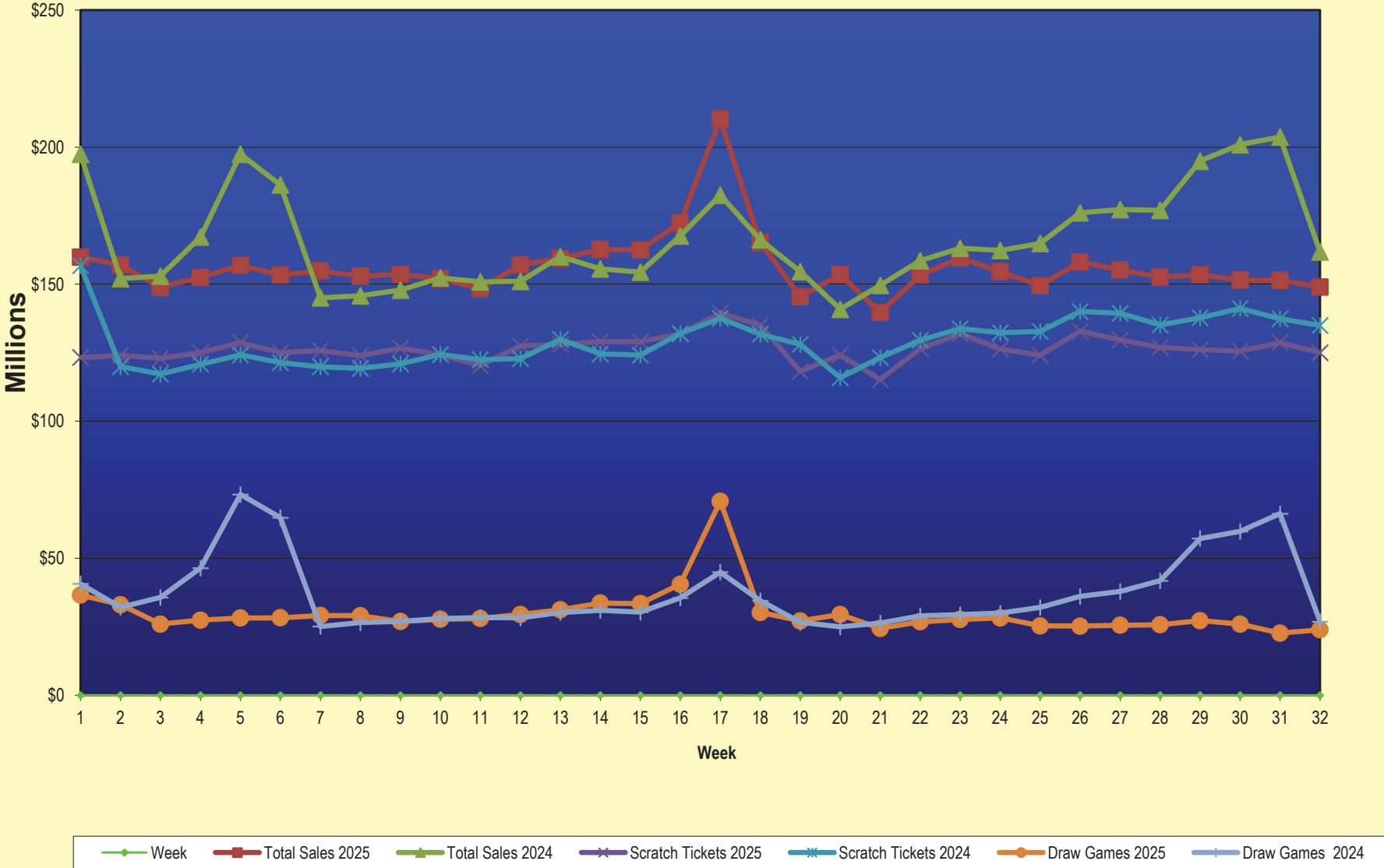
			SCRATCH TICKETS				DRAW GAMES				TOTAL SALES			
FY 2025			FY 2025	FY 2024	Difference	% change - Cumulative Sales	FY 2025	FY 2024	Difference	% change - Cumulative Sales	FY 2025	FY 2024	Difference	% change - Cumulative Sales
Week	Week	Ending												
0	9/2/2023*		\$0	\$38,978,519	(\$38,978,519)	-100.0%	\$0	\$10,637,832	(\$10,637,832)	-100.0%	\$0	\$49,616,351	(\$49,616,351)	-100.0%
1	9/7/2024		\$123,243,994	\$117,746,228	\$5,497,766	4.7%	\$36,580,304	\$30,027,540	\$6,552,765	21.8%	\$159,824,298	\$147,773,768	\$12,050,531	8.2%
2	9/14/2024		\$124,003,613	\$119,921,752	\$4,081,861	3.4%	\$33,053,733	\$32,110,344	\$943,390	2.9%	\$157,057,346	\$152,032,096	\$5,025,251	3.3%
3	9/21/2024		\$122,908,642	\$117,226,710	\$5,681,932	4.8%	\$25,947,843	\$35,718,110	(\$9,770,268)	-27.4%	\$148,856,485	\$152,944,820	(\$4,088,336)	-2.7%
4	9/28/2024		\$125,035,263	\$120,793,331	\$4,241,932	3.5%	\$27,430,947	\$46,419,217	(\$18,988,270)	-40.9%	\$152,466,210	\$167,212,548	(\$14,746,338)	-8.8%
5	10/5/2024		\$128,633,679	\$124,167,291	\$4,466,388	3.6%	\$28,187,321	\$73,290,479	(\$45,103,158)	-61.5%	\$156,821,000	\$197,457,770	(\$40,636,770)	-20.6%
6	10/12/2024		\$125,028,989	\$121,390,056	\$3,638,933	3.0%	\$28,286,612	\$64,809,497	(\$36,522,886)	-56.4%	\$153,315,601	\$186,199,553	(\$32,883,953)	-17.7%
7	10/19/2024		\$125,779,402	\$119,876,918	\$5,902,484	4.9%	\$29,102,741	\$25,121,369	\$3,981,372	15.8%	\$154,882,143	\$144,998,287	\$9,883,856	6.8%
8	10/26/2024		\$123,891,926	\$119,251,289	\$4,640,637	3.9%	\$29,078,529	\$26,497,085	\$2,581,444	9.7%	\$152,970,455	\$145,748,374	\$7,222,081	5.0%
9	11/2/2024		\$126,641,903	\$120,899,631	\$5,742,272	4.7%	\$26,910,117	\$26,966,850	(\$56,733)	-0.2%	\$153,552,020	\$147,866,481	\$5,685,539	3.8%
10	11/9/2024		\$124,170,230	\$124,357,490	(\$187,260)	-0.2%	\$27,752,989	\$27,951,994	(\$199,005)	-0.7%	\$151,923,219	\$152,309,484	(\$386,265)	-0.3%
11	11/16/2024		\$120,282,442	\$122,472,423	(\$2,189,981)	-1.8%	\$28,004,665	\$28,397,507	(\$392,842)	-1.4%	\$148,287,107	\$150,869,930	(\$2,582,823)	-1.7%
12	11/23/2024		\$127,481,870	\$122,802,742	\$4,679,128	3.8%	\$29,527,842	\$28,252,450	\$1,275,393	4.5%	\$157,009,712	\$151,055,192	\$5,954,521	3.9%
13	11/30/2024		\$128,114,304	\$129,836,541	(\$1,722,237)	-1.3%	\$31,208,493	\$30,176,458	\$1,032,035	3.4%	\$159,322,797	\$160,012,999	(\$690,202)	-0.4%
14	12/7/2024		\$129,005,761	\$124,603,445	\$4,402,316	3.5%	\$33,641,998	\$30,970,299	\$2,671,699	8.6%	\$162,647,759	\$155,573,744	\$7,074,015	4.5%
15	12/14/2024		\$129,032,767	\$124,125,352	\$4,907,415	4.0%	\$33,473,828	\$30,309,108	\$3,164,720	10.4%	\$162,506,595	\$154,434,460	\$8,072,135	5.2%
16	12/21/2024		\$131,834,163	\$132,017,161	(\$182,998)	-0.1%	\$40,534,870	\$35,542,727	\$4,992,143	14.0%	\$172,369,033	\$167,559,888	\$4,809,145	2.9%
17	12/28/2024		\$139,436,332	\$137,579,889	\$1,856,443	1.3%	\$70,775,883	\$44,917,574	\$25,858,309	57.6%	\$210,212,215	\$182,497,463	\$27,714,752	15.2%
18	1/4/2025		\$135,002,745	\$131,759,760	\$3,242,985	2.5%	\$30,242,143	\$34,501,857	(\$4,259,715)	-12.3%	\$165,244,888	\$166,261,617	(\$1,016,730)	-0.6%
19	1/11/2025		\$118,235,676	\$127,983,080	(\$9,747,404)	-7.6%	\$27,173,028	\$26,580,291	\$592,737	2.2%	\$145,408,704	\$154,563,371	(\$9,154,668)	-5.9%
20	1/18/2025		\$124,082,184	\$115,886,326	\$8,195,858	7.1%	\$29,452,444	\$24,986,950	\$4,465,494	17.9%	\$153,534,628	\$140,873,276	\$12,661,352	9.0%
21	1/25/2025		\$115,207,108	\$123,239,175	(\$8,032,067)	-6.5%	\$24,417,907	\$26,358,979	(\$1,941,072)	-7.4%	\$139,625,015	\$149,598,154	(\$9,973,139)	-6.7%
22	2/1/2025		\$126,440,697	\$129,552,953	(\$3,112,256)	-2.4%	\$26,829,867	\$28,985,243	(\$2,155,376)	-7.4%	\$153,270,564	\$158,538,196	(\$5,267,632)	-3.3%
23	2/8/2025		\$131,940,317	\$133,732,466	(\$1,792,149)	-1.3%	\$27,669,724	\$29,421,493	(\$1,751,769)	-6.0%	\$159,610,041	\$163,153,959	(\$3,543,918)	-2.2%
24	2/15/2025		\$126,302,353	\$132,311,579	(\$6,009,226)	-4.5%	\$28,231,416	\$29,986,701	(\$1,755,285)	-5.9%	\$154,533,769	\$162,298,280	(\$7,764,511)	-4.8%
25	2/22/2025		\$124,133,591	\$132,789,940	(\$8,656,349)	-6.5%	\$25,352,091	\$32,053,481	(\$6,701,390)	-20.9%	\$149,485,682	\$164,843,421	(\$15,357,739)	-9.3%
26	3/1/2025		\$132,860,674	\$140,014,976	(\$7,154,302)	-5.1%	\$25,249,720	\$36,048,898	(\$10,799,178)	-30.0%	\$158,110,394	\$176,063,874	(\$17,953,480)	-10.2%
27	3/8/2025		\$129,630,706	\$139,381,071	(\$9,750,365)	-7.0%	\$25,563,504	\$37,865,362	(\$12,301,858)	-32.5%	\$155,194,210	\$177,246,433	(\$22,052,223)	-12.4%
28	3/15/2025		\$126,899,944	\$135,122,488	(\$8,222,544)	-6.1%	\$25,720,902	\$41,791,634	(\$16,070,733)	-38.5%	\$152,620,846	\$176,914,122	(\$24,293,277)	-13.7%
29	3/22/2025		\$126,146,850	\$137,726,063	(\$11,579,213)	-8.4%	\$27,251,439	\$57,194,799	(\$29,943,361)	-52.4%	\$153,398,289	\$194,920,862	(\$41,522,574)	-21.3%
30	3/29/2025		\$125,537,110	\$141,104,504	(\$15,567,394)	-11.0%	\$25,966,459	\$59,818,632	(\$33,852,174)	-56.6%	\$151,503,569	\$200,923,136	(\$49,419,568)	-24.6%
31	4/5/2025		\$128,699,265	\$137,394,802	(\$8,695,537)	-6.3%	\$22,685,781	\$66,283,915	(\$43,598,134)	-65.8%	\$151,385,046	\$203,678,717	(\$52,293,671)	-25.7%
32	4/12/2025		\$125,021,039	\$134,916,822	(\$9,895,783)	-7.3%	\$23,899,263	\$26,874,892	(\$2,975,630)	-11.1%	\$148,920,302	\$161,791,714	(\$12,871,413)	-8.0%
33	4/19/2025			\$133,976,232				\$27,066,736				\$161,042,968		
34	4/26/2025			\$134,565,327				\$27,901,309				\$162,466,636		
35	5/3/2025			\$137,482,260				\$29,412,500				\$166,894,760		
36	5/10/2025			\$131,053,687				\$29,057,528				\$160,111,215		
37	5/17/2025			\$131,034,564				\$27,768,764				\$158,803,328		
38	5/24/2025			\$128,284,725				\$28,642,753				\$156,927,478		
39	5/31/2025			\$126,138,448				\$29,657,921				\$155,796,369		
40	6/7/2025			\$126,987,877				\$29,332,010				\$156,319,887		
41	6/14/2025			\$123,804,834				\$25,353,870				\$149,158,704		

Texas Lottery Commission  
Fiscal Year Over Year Change in Sales  
Unaudited  
FY 2025 Compared to FY 2024

			SCRATCH TICKETS				DRAW GAMES				TOTAL SALES			
FY 2025			FY 2025	FY 2024	Difference	% change - Cumulative Sales	FY 2025	FY 2024	Difference	% change - Cumulative Sales	FY 2025	FY 2024	Difference	% change - Cumulative Sales
Week	Week	Ending												
42	6/21/2025			\$125,135,883				\$25,488,767				\$150,624,650		
43	6/28/2025			\$123,029,523				\$25,603,583				\$148,633,106		
44	7/5/2025			\$125,938,835				\$25,738,723				\$151,677,558		
45	7/12/2025			\$113,657,940				\$23,579,294				\$137,237,234		
46	7/19/2025			\$121,165,975				\$26,962,145				\$148,128,120		
47	7/26/2025			\$122,156,010				\$26,553,351				\$148,709,361		
48	8/2/2025			\$124,202,395				\$27,927,542				\$152,129,937		
49	8/9/2025			\$119,923,316				\$28,787,098				\$148,710,414		
50	8/16/2025			\$123,769,379				\$29,366,395				\$153,135,774		
51	8/23/2025			\$116,518,769				\$30,891,272				\$147,410,041		
52	8/30/2025			\$124,705,011				\$33,323,753				\$158,028,764		
	8/31/2025**			\$0				\$0				\$0		
Total thru Current Week			\$4,050,665,539	\$4,130,962,773	(\$80,297,234)	-1.9%	\$955,204,395	\$1,186,869,561	(\$231,665,167)	-19.5%	\$5,005,869,934	\$5,317,832,334	(\$311,962,401)	-5.9%
Fiscal Year Total			\$4,050,665,539	\$6,644,493,763			\$955,204,395	\$1,745,284,869			\$5,005,869,934	\$8,389,778,632		

\* FY 24 includes 2 days  
\*\* FY 25 includes 1 day

Texas Lottery Commission  
Fiscal Year Over Year Change in Sales



Note: Report is prepared on a Fiscal Year basis.



**Texas Lottery Commission**  
**Scratch Tickets by Price Point**  
**Sales, Prize Expense, Sales Contribution and Payout Percentage With Year Over Year Changes**  
**Unaudited**

Fiscal	Year	Price Point	# of Active Games	FY Sales	% of Scratch Ticket Sales	Year over Year Change in Sales	FY Prize Expense	Year over Year Change in Prize Expense	FY Sales Contribution	Year over Year Change in Contribution	Average Prize Payout %	Year over Year Difference in Payout %
2024		\$1.00	11	45,928,684	1.1%		27,804,650		18,124,034		60.5%	0.1%
Through		\$2.00	17	112,924,066	2.7%		74,390,551		38,533,515		65.9%	0.6%
4/13/2024		\$3.00	7	125,487,303	3.0%		82,740,944		42,746,359		65.9%	0.0%
		\$5.00	50	729,578,610	17.7%		496,139,639		233,438,971		68.0%	0.0%
		\$10.00	29	923,833,450	22.4%		647,867,305		275,966,145		70.1%	0.1%
		\$20.00	22	950,559,960	23.0%		712,990,388		237,569,572		75.0%	0.0%
		\$30.00	5	225,252,750	5.5%		169,035,731		56,217,019		75.0%	0.0%
		\$50.00	9	614,044,550	14.9%		479,042,139		135,002,411		78.0%	0.0%
		\$100.00	3	403,353,400	9.8%		322,508,019		80,845,381		80.0%	0.1%
Total			153	\$4,130,962,773			\$3,012,519,368		\$1,118,443,405		72.9%	0.4%
2025		\$1.00	9	35,785,565	0.5%		21,733,984		14,051,581		60.7%	0.2%
Through		\$2.00	19	100,533,866	1.5%		65,636,865		34,897,001		65.3%	-0.6%
4/12/2025		\$3.00	9	106,908,753	1.6%		70,602,726		36,306,027		66.0%	0.1%
		\$5.00	47	665,727,515	10.0%		452,731,531		212,995,984		68.0%	0.0%
		\$10.00	28	887,305,400	13.4%		621,828,944		265,476,456		70.1%	0.0%
		\$20.00	24	949,655,280	14.3%		712,229,983		237,425,297		75.0%	0.0%
		\$30.00	8	224,926,110	3.4%		168,702,657		56,223,453		75.0%	0.0%
		\$50.00	10	655,011,150	9.9%		511,278,260		143,732,890		78.1%	0.0%
		\$100.00	4	424,811,900	6.4%		339,779,877		85,032,023		80.0%	0.0%
Total			158	\$4,050,665,539			\$2,964,524,827		\$1,086,140,712		73.2%	0.3%
Variance		\$1.00	-2	-10,143,119		-22.1%	-6,070,666	-21.8%	-4,072,453	-22.5%	0.20%	
2025 to		\$2.00	2	-12,390,200		-11.0%	-8,753,686	-11.8%	-3,636,514	-9.4%	-0.59%	
2024		\$3.00	2	-18,578,550		-14.8%	-12,138,218	-14.7%	-6,440,332	-15.1%	0.10%	
		\$5.00	-3	-63,851,095		-8.8%	-43,408,109	-8.7%	-20,442,986	-8.8%	0.00%	
		\$10.00	-1	-36,528,050		-4.0%	-26,038,361	-4.0%	-10,489,689	-3.8%	-0.05%	
		\$20.00	2	-904,680		-0.1%	-760,405	-0.1%	-144,275	-0.1%	-0.01%	
		\$30.00	3	-326,640		-0.1%	-333,074	-0.2%	6,434	0.0%	-0.04%	
		\$50.00	1	40,966,600		6.7%	32,236,121	6.7%	8,730,479	6.5%	0.04%	
		\$100.00	1	21,458,500		5.3%	17,271,858	5.4%	4,186,642	5.2%	0.03%	
Total			5	-\$80,297,234		-1.9%	-\$47,994,541	-1.6%	-\$32,302,693	-2.9%	0.26%	

### Notes - Scratch Ticket Variances

Texas Lottery Commission  
Scratch Tickets by Price Point  
Sales, Prize Expense, Sales Contribution and Payout Percentage With Year Over Year Changes  
Unaudited

			FY 2025			FY 2024		Difference
Sales	\$1 - \$5		\$908,955,699			\$1,013,918,663		-\$104,962,964
Prize Exp.	\$1 - \$5		\$610,705,106			\$681,075,785		-\$70,370,679
Sales Cont.	\$1 - \$5		\$298,250,593			\$332,842,878		-\$34,592,285
Prize Exp. %	\$1 - \$5		67.2%			67.2%		0.0%
			FY 2025			FY 2024		Difference
Sales	\$10 - \$100		\$3,141,709,840			\$3,117,044,110		\$24,665,730
Prize Exp.	\$10 - \$100		\$2,353,819,721			\$2,331,443,583		\$22,376,138
Sales Cont.	\$10 - \$100		\$787,890,119			\$785,600,527		\$2,289,592
Prize Exp. %	\$10 - \$100		74.9%			74.8%		0.1%
			FY 2025			FY 2024		Difference
Sales	Scratch		\$4,050,665,539			\$4,130,962,773		-\$80,297,234
Prize Exp.	Scratch		\$2,964,524,827			\$3,012,519,368		-\$47,994,541
Sales Cont.	Scratch		\$1,086,140,712			\$1,118,443,405		-\$32,302,693
Prize Exp. %	Scratch		73.2%			72.9%		0.3%

			FY 2025			FY 2024		Difference
Sales	\$1 - \$10		\$1,796,261,099			\$1,937,752,113		-\$141,491,014
Prize Exp.	\$1 - \$10		\$1,232,534,050			\$1,328,943,090		-\$96,409,040
Sales Cont.	\$1 - \$10		\$563,727,049			\$608,809,023		-\$45,081,974
Prize Exp. %	\$1 - \$10		68.6%			68.6%		0.0%
			FY 2025			FY 2024		Difference
Sales	\$20 - \$100		\$2,254,404,440			\$2,193,210,660		\$61,193,780
Prize Exp.	\$20 - \$100		\$1,731,990,777			\$1,683,576,278		\$48,414,499
Sales Cont.	\$20 - \$100		\$522,413,663			\$509,634,382		\$12,779,281
Prize Exp. %	\$20 - \$100		76.8%			76.8%		0.1%
			FY 2025			FY 2024		Difference
Sales	Scratch		\$4,050,665,539			\$4,130,962,773		-\$80,297,234
Prize Exp.	Scratch		\$2,964,524,827			\$3,012,519,368		-\$47,994,541
Sales Cont.	Scratch		\$1,086,140,712			\$1,118,443,405		-\$32,302,693
Prize Exp. %	Scratch		73.2%			72.9%		0.3%

**Texas Lottery Commission**  
**Weekly Sales Summary**  
**& Comparison to Previous Week**  
Unaudited

	Week Ending 4/12/2025	% of Sales	Week Ending 4/05/2025	% of Sales	\$ change	% change
	<u>THIS WEEK</u>		<u>LAST WEEK</u>			
Total Sales	<u>\$148,920,302</u>		<u>\$151,385,046</u>		<u>-\$2,464,744</u>	-1.6%
Scratch Tickets	<u>\$125,021,039</u>	84.0%	<u>\$128,699,265</u>	85.0%	<u>-\$3,678,226</u>	-2.9%
Lotto	\$2,125,880	1.4%	\$2,133,747	1.4%	-\$7,867	-0.4%
Lotto Extra	\$769,582	0.5%	\$784,059	0.5%	-\$14,477	-1.8%
Pick 3	\$5,014,792	3.4%	\$5,267,150	3.5%	-\$252,358	-4.8%
Pick 3 Fireball	\$581,562	0.4%	\$623,648	0.4%	-\$42,086	-6.7%
Cash Five	\$923,335	0.6%	\$955,576	0.6%	-\$32,241	-3.4%
Texas Two Step	\$1,611,054	1.1%	\$1,347,342	0.9%	\$263,712	19.6%
Mega Millions	\$4,769,028	3.2%	\$2,821,875	1.9%	\$1,947,153	69.0%
Megaplier	-\$70	0.0%	\$528,585	0.3%	-\$528,655	-100.0%
MM Just the Jackpot	\$0	0.0%	\$6,906	0.0%	-\$6,906	-100.0%
Daily 4	\$2,508,188	1.7%	\$2,673,095	1.8%	-\$164,908	-6.2%
Daily 4 Fireball	\$561,447	0.4%	\$605,332	0.4%	-\$43,885	-7.2%
Powerball	\$3,490,874	2.3%	\$3,348,440	2.2%	\$142,434	4.3%
Power Play	\$736,216	0.5%	\$733,623	0.5%	\$2,593	0.4%
All or Nothing	\$807,376	0.5%	\$856,404	0.6%	-\$49,028	-5.7%
Total Draw Game Sales	<u>\$23,899,263</u>		<u>\$22,685,781</u>		<u>\$1,213,482</u>	5.3%

\* Totals may not sum due to rounding.

**Texas Lottery Commission**  
**Weekly Sales Summary**  
**Unaudited**

**SCRATCH TICKETS**  
**TOP TEN SELLING GAMES**

**For the Week Ending: 4/12/2025**

<b>Rank</b>	<b>Price Point</b>	<b>Game</b>	<b>Sales (Millions)</b>
1	\$ 20	MILLION DOLLAR LOTERIA	\$ 6.780
2	\$ 100	\$5,000,000 FORTUNE	\$ 5.694
3	\$ 5	SUPER LOTERIA	\$ 5.200
4	\$ 10	LIMITED EDITION MEGA LOTERIA	\$ 5.184
5	\$ 20	\$1,000,000 CROSSWORD	\$ 4.503
6	\$ 10	MEGA LOTERIA	\$ 4.451
7	\$ 50	500X LOTERIA SPECTACULAR	\$ 4.308
8	\$ 50	X	\$ 4.295
9	\$ 100	LOTERIA SUPREME	\$ 4.106
10	\$ 100	\$400 MILLION MEGA BUCKS	\$ 3.478

**Texas Lottery Commission  
Prize Payout Tracking Report  
Unaudited**

**Through Week Ending 4/12/2025**

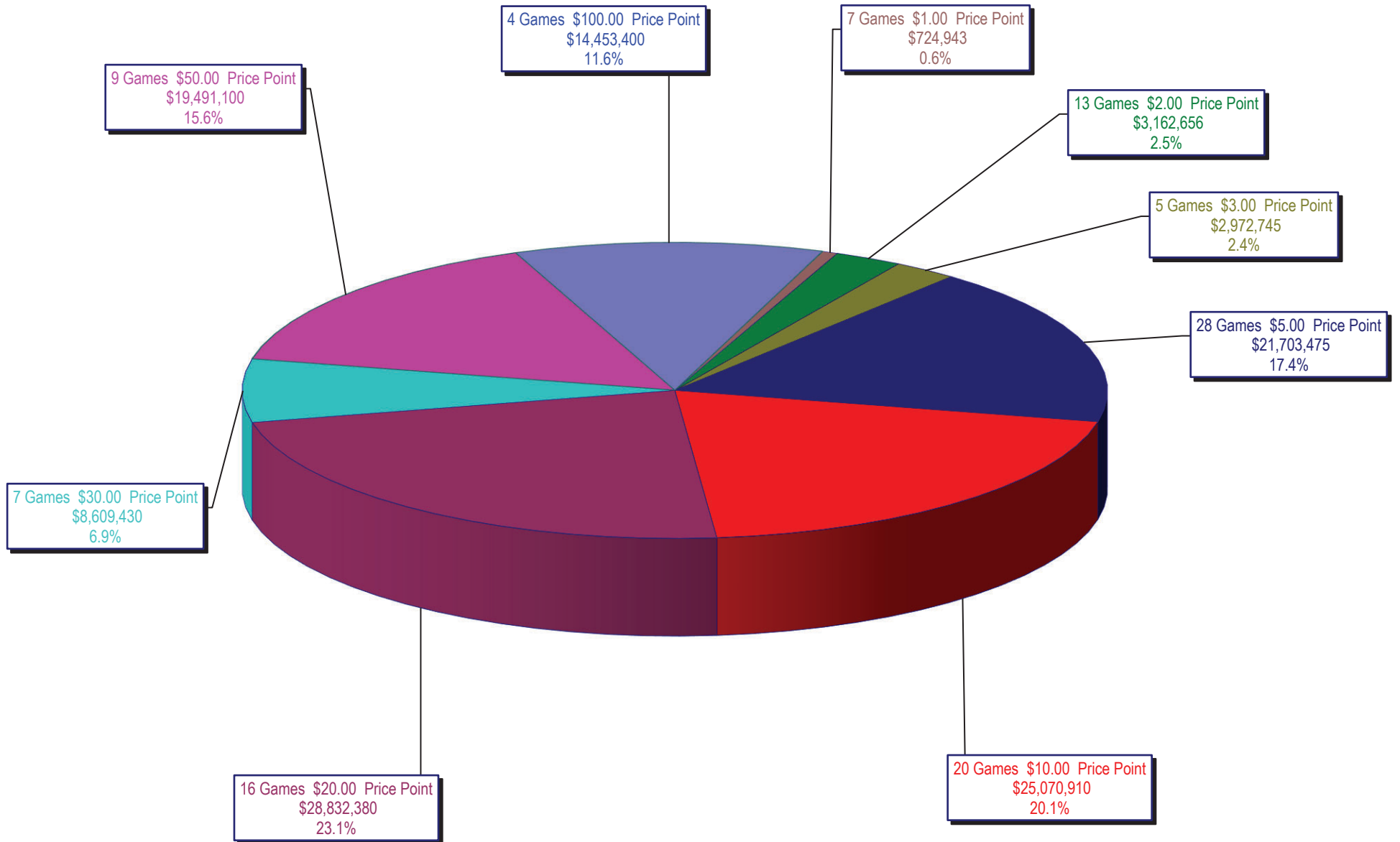
**Draw Game Sales**

	FY Sales	FY Prize Expense	Actual*	Base Payout
	Through Week Ending	Through Week Ending	Prize Payout	(Prize Pool)
	4/12/2025	4/12/2025		
Lotto	\$ 106,073,194	\$ 53,528,158	50.46%	50.00%
Lotto Extra	36,706,017	19,876,356	54.15%	53.70%
Pick 3	161,426,169	74,941,220	46.42%	50.00%
Pick 3 Fireball	19,073,619	10,409,745	54.58%	54.00%
Cash Five	30,259,224	14,951,231	49.41%	50.97%
Texas Two Step	39,846,415	20,156,748	50.59%	50.00%
Mega Millions	198,708,740	100,883,730	50.77%	50.00%**
Megaplier	38,579,220	19,416,470	50.33%	N/A
MM Just the Jackpot	579,198	295,127	50.95%	50.00%**
Daily 4	79,821,724	47,586,975	59.62%	50.00%
Daily 4 Fireball	17,454,572	9,524,539	54.57%	54.22%
Powerball	163,004,526	81,869,789	50.23%	50.00%**
Power Play	34,229,538	17,183,784	50.20%	N/A
All or Nothing	29,442,239	16,669,962	56.62%	55.98%
<b>Totals</b>	<b>\$ 955,204,395</b>	<b>\$ 487,293,834</b>	<b>51.01%</b>	

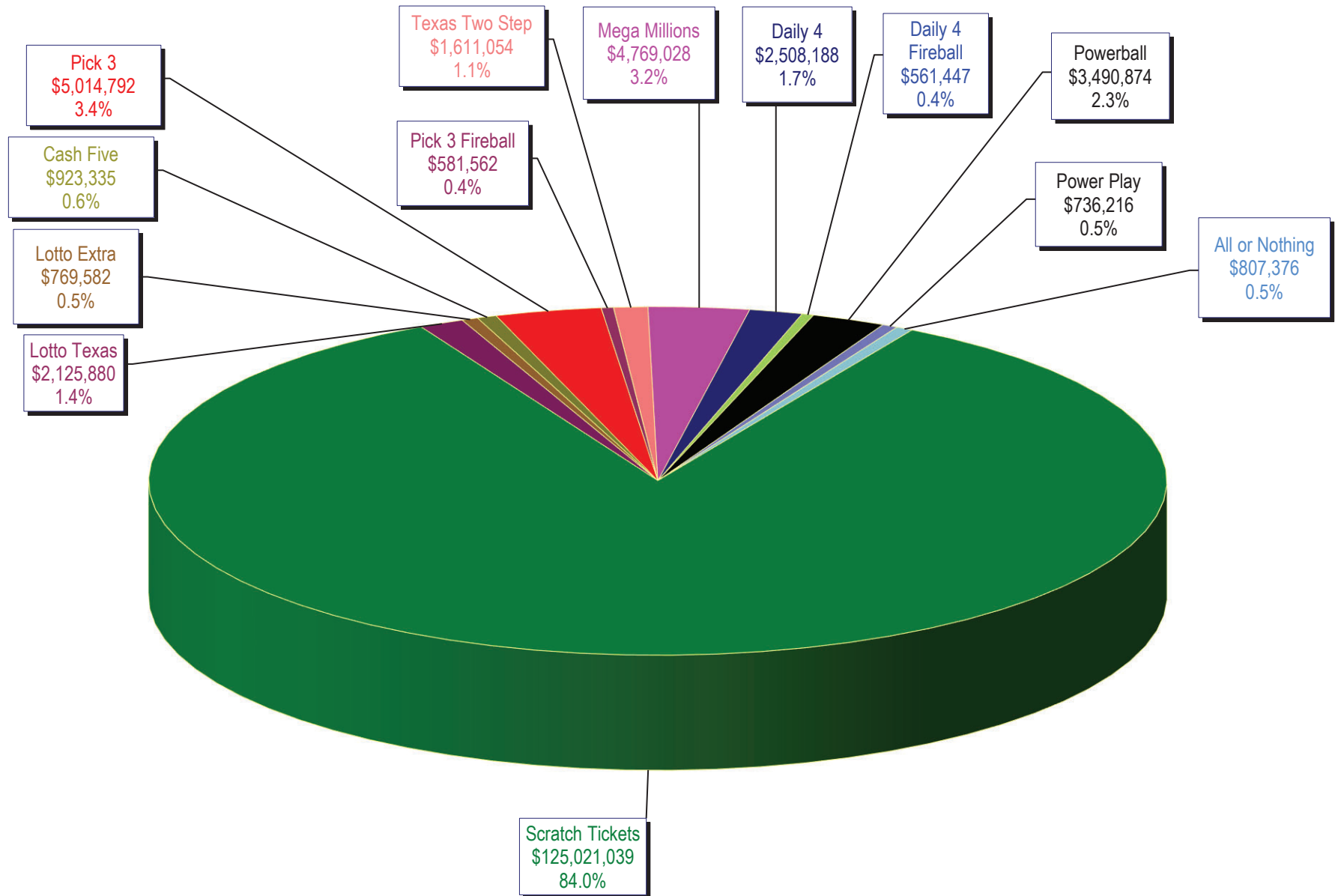
\* Before Unclaimed Prizes

\*\*Estimated; depends on # of guaranteed prizes won in Texas

Texas Lottery Commission  
Scratch Ticket Sales  
For the Week Ending 4/12/2025  
(Unaudited)



**Texas Lottery Commission**  
**All Game Sales**  
**For the Week Ending 4/12/2025**  
**(Unaudited)**



Week Ended	Scratch Tickets	New Games & Dates	Lotto Texas	Jackpot			Lotto Extra	Pick 3	Pick 3 Fireball	Cash Five	Texas Two Step	Jackpot		Mega Millions	Jackpot		Megaplier	MM Just the Jackpot	Daily 4	Daily 4 Fireball	Powerball	Jackpot			Power Play	All or Nothing	Total	Per Cap.
M	W	S										M	TH		T	F						M	W	S				
9/7/2024	123,243,994	2593 (\$1.N); 2594 (\$5.N); 2595 (\$10.N); 2596 (\$20.N) - 9/03/24	2,622,918	16	16.5	17.25	939,842	5,087,322	587,519	963,468	945,565	200	225	13,213,461	681	740	2,502,179	38,535	2,472,521	530,250	4,694,469	80	93	112	1,012,060	970,196	159,824,298	5.24
9/14/2024	124,003,613	0	2,777,413	17.5	18.25	19	980,097	5,044,316	570,781	961,544	1,001,295	325	200	9,476,468	800	20	1,832,585	26,703	2,426,425	510,441	5,314,631	121	134	152	1,133,171	995,864	157,057,346	5.15
9/21/2024	122,908,642	2597 (\$2.N); 2584 (\$5.N); 2589 (\$50.N) - 9/16/24	2,834,768	19.5	20	21	987,214	4,886,952	546,736	954,724	1,141,861	225	350	3,325,796	31	47	722,113	10,599	2,335,053	479,314	5,576,236	165	176	195	1,179,717	966,760	148,856,485	4.88
9/28/2024	125,035,263	0	2,937,551	21.5	22.25	23.25	1,028,181	5,025,245	559,848	943,541	1,529,597	525	725	3,454,190	62	77	746,763	10,071	2,413,163	499,337	6,083,626	208	223	243	1,264,456	935,379	152,466,210	5.00
10/5/2024	128,633,679	0	3,040,078	23.5	24.25	25.5	1,059,497	5,238,589	598,187	982,778	937,708	200	225	3,698,252	93	108	795,130	10,668	2,639,128	564,421	6,329,128	258	275	295	1,300,390	993,368	156,821,000	5.14
10/12/2024	125,028,989	2592 (\$5.N); 2612 (\$10.N) - 10/07/24	3,064,219	26.5	27.25	28.25	1,060,667	5,028,090	586,963	954,133	935,511	200	225	3,834,998	129	150	815,198	11,535	2,440,524	520,423	6,707,250	315	336	364	1,367,872	959,230	153,315,601	5.03
10/19/2024	125,779,402	0	3,102,844	29	29.75	30.5	1,078,464	4,856,952	559,205	941,513	1,338,019	325	500	3,888,162	169	185	822,297	11,277	2,402,478	521,455	7,199,080	388	408	437	1,449,693	931,302	154,882,143	5.08
10/26/2024	123,891,926	2601 (\$2.N); 2602 (\$5.N); 2603 (\$20.N) - 10/21/24	3,214,966	31.25	32.25	33.5	1,107,444	4,850,328	575,407	937,734	1,994,946	700	950	4,323,580	205	229	898,228	12,588	2,397,349	518,750	6,095,084	456	478	20	1,235,422	916,704	152,970,455	5.01
11/2/2024	126,641,903	0	3,385,250	34	34.75	36	1,155,190	4,943,624	587,709	954,623	1,455,981	1,225	200	4,927,020	250	281	1,002,744	14,319	2,507,503	548,702	3,679,734	28	39	54	806,345	941,374	153,552,020	5.03
11/9/2024	124,170,230	2604 (\$1.N); 2605 (\$3.N); 2606 (\$5.N); 2607 (\$10.N) - 11/04/24	3,398,576	36.25	37.5	39	1,155,137	4,975,479	597,913	954,010	1,159,891	225	350	5,578,836	303	334	1,122,494	15,966	2,471,681	537,724	3,970,136	63	75	92	873,183	941,964	151,923,219	4.98
11/16/2024	120,282,442	0	3,399,208	39.25	39.75	41.25	1,153,075	4,710,618	562,011	921,341	1,516,586	525	725	5,646,168	361	387	1,140,843	16,443	2,347,231	501,831	4,263,217	103	113	130	927,337	898,756	148,287,107	4.86
11/23/2024	127,481,870	2608 (\$5.N); 2609 (\$20.N); 2599 (\$50.N) - 11/18/24	3,524,883	42.25	43.25	44	1,202,339	5,113,876	612,602	932,218	937,019	200	225	6,353,772	420	453	1,262,483	20,271	2,604,441	572,957	4,499,048	144	155	171	974,528	917,406	157,009,712	5.15
11/30/2024	128,114,304	0	3,463,766	44.75	45	45.5	1,200,317	5,219,011	622,935	925,364	1,294,897	350	500	7,219,810	489	514	1,389,995	21,075	2,554,431	554,716	4,811,574	184	196	214	1,031,763	898,840	159,322,797	5.22
12/7/2024	129,005,761	2614 (\$2.N); 2611 (\$5.N); 2626 (\$10.N); 2556 (\$20.N) - 12/02/24	3,558,544	46.25	46.75	48.25	1,221,897	5,198,488	601,576	949,318	1,757,613	700	925	8,369,506	541	579	1,598,836	27,957	2,545,750	546,910	5,241,954	224	240	260	1,107,222	916,428	162,647,759	5.33
12/14/2024	129,032,767	0	3,865,537	48.5	49.25	50.5	1,316,769	5,080,104	593,193	947,115	880,326	200	200	10,200,960	619	695	1,942,674	31,656	2,515,509	542,230	3,800,640	20	30	45	824,524	932,592	162,506,595	5.33
12/21/2024	131,834,163	2581 (\$5.N); 2629 (\$5.N); 2616 (\$30.N) - 12/16/24	3,978,788	52.25	53.25	54.75	1,356,867	5,169,530	591,542	958,155	1,130,848	225	350	15,089,044	760	862	2,814,333	42,585	2,508,169	541,868	4,455,184	55	69	88	962,181	935,416	172,369,033	5.65
12/28/2024	139,436,332	0	4,314,485	56.25	57.25	58.5	1,482,932	4,967,579	584,511	963,415	1,690,076	525	725	37,818,546	1	1,22	7,076,212	105,177	2,430,578	530,382	6,493,422	103	117	145	1,364,495	954,074	210,212,215	6.89
1/4/2025	135,002,745	0	4,321,520	59.5	60.5	62	1,478,413	5,090,438	612,138	980,159	2,269,218	975	1,275	3,720,716	20	42	806,008	13,845	2,455,316	552,892	5,760,489	163	178	200	1,219,793	961,198	165,244,888	5.42
1/11/2025	118,235,676	2617 (\$1.N); 2618 (\$3.N); 2619 (\$5.N); 2620 (\$10.N); 2621 (\$20.N) - 1/06/25	4,168,929	63.5	65	66.75	1,413,701	4,800,020	575,048	923,323	917,157	200	225	3,197,666	62	77	701,391	11,691	2,287,613	510,197	5,584,434	220	240	263	1,166,298	915,560	145,408,704	4.77
1/18/2025	124,082,184	0	4,305,714	67.75	68.75	69.25	1,457,234	5,105,309	620,710	953,582	1,035,365	350	200	3,602,974	95	113	781,985	11,607	2,444,477	526,324	6,329,556	285	303	331	1,305,668	971,940	153,534,628	5.03
1/25/2025	115,207,108	2458 (\$2.N); 2590 (\$50.N) - 1/21/25	4,635,500	70	71	72	1,551,406	4,596,534	549,170	892,912	1,017,819	225	350	2,704,216	20	28	597,628	9,348	2,291,250	492,601	3,430,070	20	31	46	752,440	897,014	139,625,015	4.58
2/1/2025	126,440,697	0	5,051,567	73.5	73.75	75.5	1,687,754	5,043,016	613,747	952,861	873,037	200	200	3,118,811	44	59	682,867	10,629	2,448,401	533,385	3,983,596	56	69	89	863,593	966,604	153,270,564	5.02
2/8/2025	131,940,317	2625 (\$5.N); 2578 (\$10.N); 2665 (\$100.N) - 2/03/25	4,891,500	76.5	77.5	78.25	1,627,236	5,083,716	606,833	957,532	936,305	200	225	3,304,160	77	94	718,647	11,232	2,511,438	540,025	4,540,246	100	113	133	982,566	958,288	159,610,041	5.23
2/15/2025	126,302,353	0	4,880,368	79.75	80.75	83.25	1,608,037	5,064,662	607,982	955,696	1,240,201	325	500	3,465,110	110	129	747,340	11,391	2,519,382	546,703	4,651,272	142	154	172	1,001,833	931,440	154,533,769	5.07
2/22/2025	124,133,591	2615 (\$5.N); 2630 (\$20.N) - 2/17/25	2,892,410	83.5	5	5.25	1,019,716	4,911,893	595,030	938,360	892,745	200	225	3,521,294	145	165	751,192	11,586	2,470,658	549,617	4,821,166	183	195	215	1,023,831	952,594	149,485,682	4.90
3/1/2025	132,860,674	0	2,027,871	5.5	5.75	6	763,843	5,416,781	659,400	956,141	926,838	325	200	3,490,572	181	197	738,375	11,820	2,715,393	617,873	4,998,808	230	248	272	1,032,483	893,524	158,110,394	5.18
3/8/2025	129,630,706	2649 (\$5.N); 2652 (\$10.N); 2638 (\$20.N) - 3/03/25	2,001,076	6.25	6.5	6.75	754,632	5,448,084	658,313	954,793	1,010,198	225	325	3,588,181	215	233	753,027	10,641	2,779,343	645,933	5,051,920	279	295	320	1,034,554	872,810	155,194,210	5.09



Week Ended	Scratch Tickets	New Games & Dates	Lotto Texas	Jackpot			Lotto Extra	Pick 3	Pick 3 Fireball	Cash Five	Texas Two Step	Jackpot		Mega Millions	Jackpot		Megaplier	MM Just the Jackpot	Daily 4	Daily 4 Fireball	Powerball	Jackpot			Power Play	All or Nothing	Total	Per Cap.
				M	W	S						M	TH		T	F						M	W	S				
3/15/2025	126,899,944	0	2,012,813	7	7.25	7.5	754,739	5,172,208	617,785	927,747	1,420,133	475	625	3,677,922	256	277	763,072	10,713	2,593,294	593,305	5,283,372	335	353	378	1,069,742	824,058	152,620,846	5.00
3/22/2025	126,146,850	2634 (\$2.N); 2635 (\$5.N) - 3/17/25	2,064,303	7.75	8	8.25	773,072	5,090,772	613,750	931,010	1,817,788	850	1,100	4,018,308	301	324	828,405	11,061	2,572,113	583,096	5,948,430	398	416	444	1,193,132	806,200	153,398,289	5.03
3/29/2025	125,537,110	0	2,076,202	8.5	8.75	9	776,664	4,924,700	599,872	911,203	883,476	200	225	3,288,978	344	20	695,661	9,303	2,537,838	574,140	6,567,440	461	484	515	1,299,407	821,576	151,503,569	4.97
4/5/2025	128,699,265	0	2,133,747	9.25	9.5	10	784,059	5,267,150	623,648	955,576	1,347,342	325	500	2,821,875	29	43	528,585	6,906	2,673,095	605,332	3,348,440	20	30	47	733,623	856,404	151,385,046	4.96
4/12/2025	125,021,039	2640 (\$5.N); 2633 (\$30.N) - 4/07/25	2,125,880	10.25	11	12	769,582	5,014,792	581,562	923,335	1,611,054	675	925	4,769,028	54	72	(79)	0	2,508,188	561,447	3,490,874	54	65	82	736,216	807,376	148,920,302	4.88
weekly change	-2.9%		-0.4%				-1.8%	-4.8%	-6.7%	-3.4%	19.6%			69.0%			-100.0%	-100.0%	-6.2%	-7.2%	4.3%				0.4%	-5.7%	-1.6%	
SALES			SALES				SALES	SALES	SALES	SALES	SALES			SALES			SALES	SALES	SALES	SALES	SALES				SALES	SALES	SALES	% of Sales
Calendar Year to date 2025	1,837,620,406		47,870,129				16,624,103	74,249,449	8,921,904	13,735,449	17,219,458			50,524,831			9,717,741	145,194	36,919,316	8,239,416	71,443,608				14,919,166	13,073,636	2,221,223,805	100.0%
Fiscal Year to date 2025	4,050,665,539		106,073,194				36,706,017	161,426,169	19,073,619	30,259,224	39,846,415			198,708,740			38,579,220	579,198	79,821,724	17,454,572	163,004,526				34,229,538	29,442,239	5,005,869,934	100.0%

<b>Texas Lottery Commission</b> <b>Unaudited Monthly Detail of Revenue Transfers and Allocations to the State of Texas</b>						
FY 2025 Accrued Revenue Transfers		Foundation School Fund	Texas Veterans Commission	Unclaimed Prizes	Total Accrued Revenue Transfers	Reserve For Administration Expenditures
Transfer Period	Transfer Date*					
September-24	10/14/2024	127,865,986.75	2,205,336.97	-	130,071,323.72	46,096,153.43
October-24	11/14/2024	128,239,960.25	2,486,033.22	-	130,725,993.47	47,640,823.23
November-24	12/12/2024	117,244,991.29	2,241,364.78	18,416,174.57	137,902,530.64	46,703,210.68
December-24	1/14/2025	157,386,878.24	2,754,951.63	-	160,141,829.87	54,485,041.66
January-25	2/13/2025	122,082,130.10	2,523,339.53	-	124,605,469.63	46,294,580.75
February-25	3/13/2025	108,098,175.08	2,577,546.39	25,926,728.89	136,602,450.36	43,528,533.48
March-25	4/10/2025	126,578,945.50	2,552,151.27	-	129,131,096.77	47,411,647.67
<b>Total FY 2025</b>		<b>887,497,067.21</b>	<b>17,340,723.79</b>	<b>44,342,903.46</b>	<b>949,180,694.46</b>	<b>332,159,990.90</b>

FY 2025 Reserve for Administration

332,159,990.90

<b>Quarterly Detail of Unclaimed Prizes Transferred to the State of Texas</b>					
FY 2025 Accrued Revenue Transfers		Foundation School Fund	Texas Veterans Commission	Multicategorical Teaching	Total Accrued Revenue Transfers
Transfer Period	Transfer Date			Hospital Account	
November-24	12/12/2024	16,380,461.83	1,596,269.74	439,443.00	18,416,174.57
February-25	3/13/2025	25,549,231.35	377,497.54	-	25,926,728.89
May-25					-
August-25					-
<b>Total FY 2025</b>		<b>41,929,693.18</b>	<b>1,973,767.28</b>	<b>439,443.00</b>	<b>44,342,903.46</b>
		-	-	-	-

\* Current month transfers to Foundation School Fund and Texas Veterans Commission are due by 15th of each month.



**Texas Lottery Commission  
Summary Financial Information**

(Audited unless otherwise noted)

	FY92	FY93	FY94	FY95	FY96	FY97	FY98	FY99	FY00	FY01	FY02	FY03
<b>SALES:</b>												
Total Sales	\$591,570,852	\$1,856,090,753	\$2,760,217,110	\$3,036,517,308	\$3,432,309,408	\$3,745,469,123	\$3,090,031,624	\$2,571,599,617	\$2,657,290,483	\$2,825,298,062	\$2,966,262,259	\$3,130,692,602
<b>EXPENSE:</b>												
Total Prize Expense	\$268,869,533	\$981,698,406	\$1,528,691,259	\$1,689,345,205	\$1,951,060,296	\$2,151,737,003	\$1,648,106,270	\$1,329,014,108	\$1,508,849,679	\$1,643,183,197	\$1,715,355,958	\$1,845,198,257
Prize Payout Percentage	45.5%	52.9%	55.4%	55.6%	56.8%	57.4%	53.3%	51.7%	56.8%	58.2%	57.8%	58.9%
Commissions	\$29,578,543	\$92,815,046	\$138,011,596	\$151,845,090	\$171,719,838	\$187,394,765	\$154,581,140	\$128,827,796	\$133,000,980	\$141,299,672	\$148,359,044	\$156,554,911
Retailer Payments	-	\$4,282,752	\$6,107,225	\$6,942,860	\$5,429,790	\$6,019,956	\$5,596,251	\$4,482,957	\$4,390,015	\$5,048,075	\$4,172,483	\$3,606,784
Administrative Expenses	\$45,116,542	\$124,873,791	\$166,644,017	\$188,383,295	\$217,499,396	\$236,216,507	\$198,286,932	\$169,307,159	\$172,193,140	\$172,823,281	\$166,748,438	\$158,329,321
<b>UNCLAIMED PRIZES:</b>												
Unclaimed Prizes Transferred to State	-	-	-	\$2,647,094	\$7,284,316	\$2,982,148	-	\$9,688,000	\$35,517,171	\$38,939,061	\$69,618,383	\$66,993,269
<b>ACCRUED TRANSFERS:</b>												
To General Revenue Fund	\$249,978,109	\$656,844,512	\$927,684,072	\$1,015,037,492	\$1,098,323,023	\$1,008,543,523	-	-	-	-	-	-
To Multicategorical Teaching Hospital Account	-	-	-	-	-	-	-	-	\$35,517,171	\$4,482,829	\$40,000,000	-
To Tertiary Care Facility Account	-	-	-	-	-	-	-	-	-	\$34,456,232	\$29,618,383	\$66,993,269
To HHSC Graduate Medical Program	-	-	-	-	-	-	-	-	-	-	-	-
To Foundation School Fund	-	-	-	-	-	\$174,237,106	\$1,097,795,590	\$953,370,758	\$827,328,229	\$825,059,846	\$859,263,426	\$882,094,795
To Texas Veterans Commission	-	-	-	-	-	-	-	-	-	-	-	-
Total Accrued Transfers to State	\$249,978,109	\$656,844,512	\$927,684,072	\$1,015,037,492	\$1,098,323,023	\$1,182,780,629	\$1,097,795,590	\$953,370,758	\$862,845,399	\$863,998,907	\$928,881,809	\$949,088,064
	FY04	FY05	FY06	FY07	FY08	FY09	FY10	FY11	FY12	FY13	FY14	FY15
<b>SALES:</b>												
Total Sales	\$3,487,924,570	\$3,662,462,838	\$3,774,685,562	\$3,774,178,802	\$3,671,477,953	\$3,720,113,711	\$3,738,369,487	\$3,811,270,135	\$4,190,815,913	\$4,376,286,456	\$4,384,597,063	\$4,529,700,425
<b>EXPENSE:</b>												
Total Prize Expense	\$2,068,643,667	\$2,228,000,419	\$2,310,561,488	\$2,315,304,967	\$2,281,125,261	\$2,299,752,567	\$2,300,182,561	\$2,387,243,785	\$2,632,624,266	\$2,767,359,068	\$2,741,184,820	\$2,858,319,409
Prize Payout Percentage	59.3%	60.8%	61.2%	61.3%	62.1%	61.8%	61.5%	62.6%	62.8%	63.2%	62.5%	63.1%
Commissions	\$174,413,287	\$183,176,006	\$188,818,621	\$188,751,041	\$183,771,055	\$186,145,362	\$187,302,974	\$190,808,232	\$209,816,328	\$218,892,925	\$219,540,166	\$226,667,064
Retailer Payments	\$2,143,103	\$4,286,558	\$2,804,521	\$4,423,161	\$1,953,223	\$1,926,785	\$8,857,990	\$21,424,731	\$16,061,583	\$17,940,232	\$17,959,225	\$21,897,293
Administrative Expenses	\$180,818,463	\$178,795,994	\$184,901,385	\$182,731,292	\$167,594,360	\$192,447,630	\$185,283,677	\$184,320,962	\$169,440,523	\$181,966,473	\$185,435,445	\$189,334,443
<b>UNCLAIMED PRIZES:</b>												
Unclaimed Prizes Transferred to State	\$41,581,437	\$60,764,140	\$54,222,589	\$58,947,388	\$54,134,747	\$62,732,496	\$66,591,791	\$53,775,634	\$51,743,502	\$59,870,140	\$78,324,661	\$76,225,020
<b>ACCRUED TRANSFERS:</b>												
To General Revenue Fund	\$19,465,000	\$22,880,577	\$44,222,589	\$48,947,388	\$44,134,747	\$52,732,496	\$56,591,791	\$43,249,367	\$45,431,754	\$53,657,834	-	-
To Multicategorical Teaching Hospital Account	\$10,782,342	\$9,217,658	\$10,000,000	\$10,000,000	\$10,000,000	\$10,000,000	\$10,000,000	\$10,000,000	\$5,750,000	\$5,750,000	\$5,411,953	\$4,397,812
To Tertiary Care Facility Account	-	-	-	-	-	-	-	-	-	-	-	-
To HHSC Graduate Medical Program	\$11,334,095	\$28,665,905	-	-	-	-	-	-	-	-	-	-
To Foundation School Fund	\$1,009,447,487	\$1,009,538,729	\$1,036,110,469	\$1,034,072,617	\$980,744,256	\$999,421,562	\$989,139,753	\$961,885,417	\$1,099,034,712	\$1,148,515,795	\$1,203,771,931	\$1,225,175,057
To Texas Veterans Commission	-	-	-	-	-	-	\$7,353,334	\$8,648,112	\$5,306,574	\$6,178,158	\$11,539,037	\$13,128,754
Total Accrued Transfers to State	\$1,051,028,924	\$1,070,302,869	\$1,090,333,058	\$1,093,020,005	\$1,034,879,002	\$1,062,154,058	\$1,063,084,879	\$1,023,782,895	\$1,155,523,040	\$1,214,101,786	\$1,220,722,920	\$1,242,701,623
	FY16	FY17	FY18	FY19	FY20	FY21	FY22	FY23	FY24	FY25 +	Cumulative	
<b>SALES:</b>										Unaudited		
Total Sales	\$5,067,517,923	\$5,077,461,652	\$5,626,846,887	\$6,251,478,651	\$6,704,027,783	\$8,107,203,394	\$8,296,892,076	\$8,725,650,412	\$8,389,778,632	\$4,745,142,727	\$146,777,232,249	
<b>EXPENSE:</b>												
Total Prize Expense	\$3,186,430,316	\$3,257,375,437	\$3,666,102,586	\$4,056,494,096	\$4,442,357,644	\$5,418,271,882	\$5,599,717,954	\$5,818,071,808	\$5,655,485,713	\$3,270,841,737	\$91,822,560,618	
Prize Payout Percentage	62.9%	64.2%	65.2%	64.9%	66.3%	66.8%	67.5%	66.7%	67.4%	68.9%	62.6%	
Commissions	\$253,512,424	\$253,928,168	\$281,498,020	\$313,054,138	\$335,638,397	\$405,847,848	\$415,358,212	\$436,787,768	\$420,004,768	\$237,514,202	\$7,345,235,427	
Retailer Payments	\$19,793,946	\$22,368,417	\$24,222,594	\$22,777,746	\$12,263,100	\$26,250,000	\$24,155,125	\$27,972,600	\$28,499,025	\$16,250,000	\$402,310,105	
Administrative Expenses	\$206,170,765	\$215,911,246	\$209,354,896	\$229,293,016	\$232,394,902	\$268,849,161	\$257,744,444	\$254,167,367	\$255,862,566	\$135,500,160	\$6,464,740,989	
<b>UNCLAIMED PRIZES:</b>												
Unclaimed Prizes Transferred to State	\$83,552,791	\$69,676,919	\$71,290,369	\$75,146,932	\$80,905,980	\$73,407,401	\$62,626,357	\$88,948,596	\$80,295,850	\$44,342,903	\$1,682,777,086	
<b>ACCRUED TRANSFERS:</b>												
To General Revenue Fund	-	-	-	\$0	-	-	-	-	-	-	\$5,387,724,273	
To Multicategorical Teaching Hospital Account	\$4,904,883	\$4,904,882	\$439,444	\$439,442	\$439,443	\$439,443	\$439,443	\$439,443	\$439,443	\$439,443	\$194,635,074	
To Tertiary Care Facility Account	-	-	-	-	\$0	-	-	-	-	-	\$131,067,884	
To HHSC Graduate Medical Program	-	-	-	-	\$0	-	-	-	-	-	\$40,000,000	
To Foundation School Fund	\$1,372,719,992	\$1,312,856,719	\$1,431,907,289	\$1,616,776,461	\$1,661,046,854	\$1,974,473,848	\$1,971,945,304	\$2,131,420,335	\$1,980,140,364	\$929,426,760	\$34,698,721,458	
To Texas Veterans Commission	\$14,680,974	\$16,206,348	\$18,127,925	\$19,374,563	\$22,242,814	\$23,400,245	\$26,032,170	\$29,680,793	\$26,764,761	\$19,314,491	\$267,979,053	
Total Accrued Transfers to State	\$1,392,305,849	\$1,333,967,949	\$1,450,474,658	\$1,636,590,465	\$1,683,729,110	\$1,998,313,536	\$1,998,416,918	\$2,161,540,571	\$2,007,344,568	\$949,180,694	\$40,720,127,743	

\* Totals may not sum due to rounding.

(1) Includes transfers from sales and unclaimed prizes

\*Through Mar 2025



Texas Lottery Commission  
Annual Budget Report By Strategy  
Fiscal Year 2025  
From 9/1/2024 Through 2/28/2025  
(In Millions)

Attachment C

Fund 5025 - Lottery Dedicated Account							
Strategy	Strategy Title	Budget	YTD Expenditures	YTD Encumbrance	Total Budget Variance	% Expended/ Encumbered	
1.1.1	Lottery Operations	\$ 4.82	\$ 2.15	\$ 2.25	\$ 0.41	91.4%	
1.1.2	Lottery Field Operations	\$ 4.01	\$ 1.87	\$ 1.95	\$ 0.19	95.2%	
1.1.3	Product Development	\$ 6.22	\$ 2.04	\$ 3.07	\$ 1.11	82.2%	
1.1.4	Security	\$ 5.86	\$ 2.57	\$ 2.96	\$ 0.32	94.5%	
1.1.5	Central Administration	\$ 16.14	\$ 6.96	\$ 7.54	\$ 1.64	89.8%	
1.1.6	Lottery Operator Contract	\$ 155.79	\$ 72.21	\$ 83.58	\$ 0.01	100.0%	
1.1.7	Scratch Ticket Production Contract	\$ 90.00	\$ 16.96	\$ 21.99	\$ 51.06	43.3%	
1.1.8	Promote Lottery Games Contract	\$ 10.00	\$ 3.91	\$ 5.77	\$ 0.32	96.8%	
1.1.9	Drawing and Broadcast Contract	\$ 2.26	\$ 0.94	\$ 1.32	\$ -	100.0%	
1.1.10	Retailer Bonus	\$ 2.01	\$ 2.00	\$ -	\$ 0.01	99.5%	
1.1.11	Retailer Commissions	\$ 39.17	\$ 16.25	\$ -	\$ 22.92	41.5%	
Total Fund 5025 - Lottery Dedicated Account		\$ 336.28	\$ 127.87	\$ 130.43	\$ 77.98	76.8%	
Reconciliation to General Appropriations Act:							
	Article IX, Section 8.02, Third Party Reimbursements (2024-25 GAA)	(0.61)					
	Rider 10, Appropriation of Increased Revenue (2024-25 GAA)	(0.28)					
	Article IX, Sec. 14.03(i), Capital Budget (2024-25 GAA)	(0.17)					
	Article IX, Section 17.16, Salary Increase Addl Request (2024-25 GAA)	(0.09)					
	Article IX, Section 17.03, PR Cont-Health Ins (2024-25 GAA)	0.25					
	Article IX, Section 17.06, PR Cont - Retire (2024-25 GAA)	0.12					
Total Fund 5025, General Appropriations Act		\$ 335.50					

Fund 0001 - General Revenue							
Strategy	Strategy Title	Budget	YTD Expenditures	YTD Encumbrance	Total Budget Variance	% Expended/ Encumbered	
2.1.1	Bingo Licensing	\$ 0.67	\$ 0.28	\$ 0.30	\$ 0.09	86.5%	
2.1.2	Bingo Education and Development	\$ 0.11	\$ 0.05	\$ 0.06	\$ 0.00	96.2%	
2.1.3	Bingo Law Compliance Field Oper.	\$ 1.52	\$ 0.72	\$ 0.69	\$ 0.10	93.3%	
2.1.4	Bingo Prize Fee Collection & Acct.	\$ 0.28	\$ 0.09	\$ 0.13	\$ 0.07	76.2%	
Total Fund 0001 - General Revenue		\$ 2.58	\$ 1.15	\$ 1.17	\$ 0.26	89.8%	
Reconciliation to General Appropriations Act:							
	Article IX, Section 17.16, Salary Increase Addl Request (2024-25 GAA)	(0.02)					
	Article IX, Section 17.03, PR Cont-Health Ins (2024-25 GAA)	0.02					
	Article IX, Section 17.06, PR Cont - Retire (2024-25 GAA)	0.01					
Total Fund 0001, General Appropriations Act		\$ 2.60					

Totals may not sum due to rounding.

**TEXAS LOTTERY COMMISSION**  
**FY 2025 METHOD OF FINANCING SUMMARY**  
**From 9/1/2024 Through 2/28/2025**

**LOTTERY-FUND 5025**

<b>FY 2025 Original Appropriation</b>	<b>\$</b>	<b>335,501,609</b>
Add: Article IX, Section 8.02, Third Party Reimbursements		611,125
Rider 10, Appropriation of Increased Revenue		279,252
Article IX, Sec. 14.03(i), Capital Budget		170,191
Article IX, Section 17.16, Salary Increase Addl Request		91,223
Less: Article IX, Section 17.03, PR Cont-Health Ins (2024-25 GAA)		(247,828)
Article IX, Section 17.06, PR Cont - Retire (2024-25 GAA)		(123,914)
<b>FY 2025 Adjusted Appropriation</b>	<b>\$</b>	<b>336,281,658</b>
YTD Expenditures/Encumbrances		(258,298,193)
<b>Remaining Budget</b>	<b>\$</b>	<b>77,983,465</b>
% of Total Budget Expended/Encumbered		76.8%

**BINGO-FUND 0001**

<b>FY 2025 Original Appropriation</b>	<b>\$</b>	<b>2,596,625</b>
Add: Article IX, Section 17.16, Salary Increase Addl Request		19,185
Less: Article IX, Section 17.03, PR Cont-Health Ins (2024-25 GAA)		(21,032)
Article IX, Section 17.06, PR Cont - Retire (2024-25 GAA)		(10,516)
<b>FY 2025 Adjusted Appropriation</b>	<b>\$</b>	<b>2,584,262</b>
YTD Expenditures/Encumbrances		(2,320,132)
<b>Remaining Budget</b>	<b>\$</b>	<b>264,130</b>
% of Total Budget Expended/Encumbered		89.8%

**Texas Lottery Commission**  
**Encumbrance Budget - Quarterly Budget Report-Strategy**  
**From 9/1/2024 Through 2/28/2025**

**2025 - Appropriation Year 2025**  
**5025 - Texas Lottery Dedicated Account**

Account Code	Account Title	Budget	YTD Expenditures	YTD Encumbrance	Total Budget Variance	% Expended Encumbered
1.1.1	Lottery Operations	4,820,407.49	2,153,377.75	2,252,993.07	414,036.67	91.41%
1.1.2	Lottery Field Operations	4,011,720.84	1,868,237.97	1,952,882.62	190,600.25	95.24%
1.1.3	Product Development	6,224,913.40	2,044,314.66	3,072,459.88	1,108,138.86	82.19%
1.1.4	Security	5,857,395.72	2,573,411.66	2,961,205.88	322,778.18	94.49%
1.1.5	Central Administration	16,140,598.76	6,964,025.19	7,537,001.94	1,639,571.63	89.84%
1.1.6	Lottery Operator Contract	155,790,537.00	72,205,527.49	83,579,189.75	5,819.76	99.99%
1.1.7	Scratch Ticket Production Contract	90,000,000.00	16,955,343.24	21,986,368.93	51,058,287.83	43.26%
1.1.8	Promote Lottery Games Contract(s)	10,000,000.00	3,913,637.28	5,767,240.88	319,121.84	96.80%
1.1.9	Drawing and Broadcast Contract	2,261,975.00	940,968.75	1,321,006.25	0.00	100.00%
1.1.10	Retailer Bonus	2,010,000.00	1,999,000.00	0.00	11,000.00	99.45%
1.1.11	Retailer Commissions	39,165,000.00	16,249,999.86	0.00	22,915,000.14	41.49%
<b>Total 5025 - Texas Lottery Dedicated Account</b>		<b>336,282,548.21</b>	<b>127,867,843.85</b>	<b>130,430,349.20</b>	<b>77,984,355.16</b>	<b>76.81%</b>

**Texas Lottery Commission**  
**Encumbrance Budget - Quarterly Budget Report-Strategy**  
**From 9/1/2024 Through 2/28/2025**

**2025 - Appropriation Year 2025**  
**0001 - General Revenue Fund**

<b>Strategy</b>	<b>Strategy Title</b>	<b>Budget</b>	<b>YTD Expenditures</b>	<b>YTD Encumbrance</b>	<b>Total Budget Variance</b>	<b>% Expended Encumbered</b>
2.1.1	Bingo Licensing	670,807.83	284,542.61	296,004.29	90,260.93	86.54%
2.1.2	Bingo Education and Development	114,894.30	52,790.64	57,685.12	4,418.54	96.15%
2.1.3	Bingo Law Compliance Field Oper	1,517,674.54	721,472.27	694,258.83	101,943.44	93.28%
2.1.4	Bingo Prize Fee Collection & Accting	279,995.18	87,091.98	126,286.73	66,616.47	76.20%
	<b>Total 0001 - General Revenue Fund</b>	<b>2,583,371.85</b>	<b>1,145,897.50</b>	<b>1,174,234.97</b>	<b>263,239.38</b>	<b>89.81%</b>

**Texas Lottery Commission**  
**Encumbrance Budget - Quarterly Budget Report-Acct Code**  
**From 9/1/2024 Through 2/28/2025**

**5025 - Texas Lottery Dedicated Account**  
**2025 - Appropriation Year 2025**

Account Code	Account Title	Budget	YTD Expenditures	YTD Encumbrance	Total Budget Variance	% Expended Encumbered
6001	Salaries and Wages	24,729,890.37	12,022,866.48	12,454,940.82	252,083.07	98.98%
6003	Longevity Pay	394,880.00	190,680.00	201,580.00	2,620.00	99.33%
6004	Merit Pool	232,141.48	0.00	0.00	232,141.48	0.00%
6005	Professional Fees & Services	6,178,020.08	2,340,591.41	3,598,484.55	238,944.12	96.13%
6006	Lottery Operator Contract	155,790,537.00	72,205,527.49	83,579,189.75	5,819.76	99.99%
6007	Advertising	10,000,000.00	3,913,637.28	5,767,240.88	319,121.84	96.80%
6008	Retailer Bonus	39,165,000.00	16,249,999.86	0.00	22,915,000.14	41.49%
6009	Printing and Reproduction	87,706,300.00	16,988,353.80	21,958,002.75	48,759,943.45	44.40%
6015	Other Operating Costs	11,138,001.00	3,851,130.37	2,870,910.45	4,415,960.18	60.35%
6020	Travel	267,420.00	82,193.72	0.00	185,226.28	30.73%
6021	Out of State Travel	110,000.00	22,863.44	0.00	87,136.56	20.78%
6071	Capital Expenditures	170,191.00	0.00	0.00	170,191.00	0.00%
6090	Agencywide Budget	400,167.28	0.00	0.00	400,167.28	0.00%
<b>Total 5025 - Texas Lottery Dedicated Account</b>		<b>336,282,548.21</b>	<b>127,867,843.85</b>	<b>130,430,349.20</b>	<b>77,984,355.16</b>	<b>76.81%</b>



Texas Lottery Commission  
Encumbrance Budget - Quarterly Budget Report-Acct Code  
From 9/1/2024 Through 2/28/2025

0001 - General Revenue Fund  
2025 - Appropriation Year 2025

Account Code	Account Title	Budget	YTD Expenditures	YTD Encumbrance	Total Budget Variance	% Expended Encumbered
6001	Salaries and Wages	2,074,682.41	951,108.61	1,072,345.78	51,228.02	97.53%
6003	Longevity Pay	40,140.00	19,440.00	20,540.00	160.00	99.60%
6004	Merit Pool	15,621.99	-	-	15,621.99	0.00%
6005	Professional Fees & Services	105,452.00	42,637.80	62,672.72	141.48	99.86%
6015	Other Operating Costs	151,768.40	115,213.65	18,676.47	17,878.28	88.22%
6020	Travel	39,500.00	17,497.44	-	22,002.56	44.29%
6021	Out of State Travel	2,250.00	-	-	2,250.00	0.00%
6090	Agencywide Budget	153,957.05	-	-	153,957.05	0.00%
<b>Total 0001 - General Revenue Fund</b>		<b>2,583,371.85</b>	<b>1,145,897.50</b>	<b>1,174,234.97</b>	<b>263,239.38</b>	<b>89.81%</b>